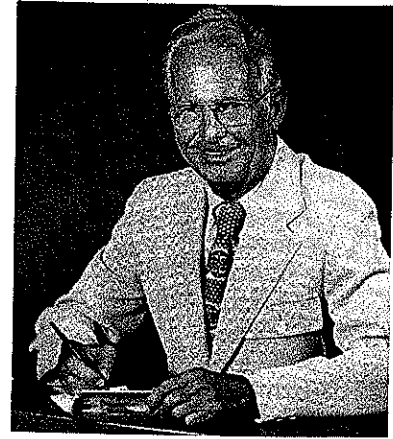


- Back Hoes
- Front End Loaders
- Front Blades
- Power Steering



Brantly Mfg. Co.

P.O. Box 187, Frederick, Oklahoma 73542 • 405-335-3812



To our many fine, loyal distributors, dealers and customers;

The years 1978 and 1979 were years of unprecedented growth, unusually successful for Brantly Manufacturing Company. In two years we have quadrupled our volume in Backhoes, Front End Loaders and Blades, introduced the Power Steering Units for the twelve to twenty horse-power tractors and later expanded to twenty to forty horse-power tractors.

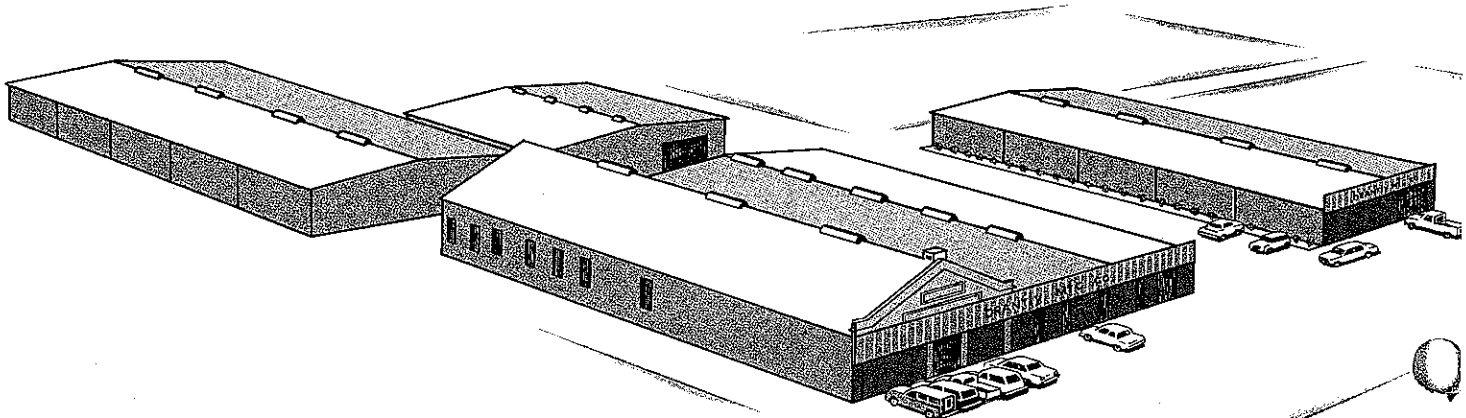
. . . and the growing pains that go with it.

As we expanded our product line to include equipment for tractors from twenty to forty horse-power, it was necessary to introduce engineering changes throughout the line. These changes offered greater durability, more rugged construction and increased capabilities. Tighter quality control procedures were initiated and no area of manufacturing or distribution has gone without some change and improvement. The patience, guidance and help from our dealers and distributors has been tremendously valuable.

We believe that the equipment we are offering for 1980 is the best that money can buy . . .

job designed to offer maximum performance and flexibility and the ultimate in efficiency and economy.


N. O. BRANTLY

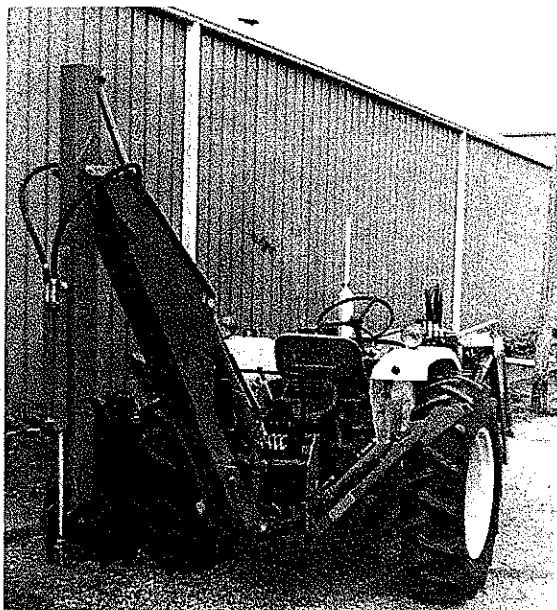


NEW, IMPROVED DESIGN

The jobs our customers wanted to do are demanding more and more ruggedness in our equipment. When the jobs got harder, we made our backhoes tougher. Wherever possible, grade 5 plated bolts are taking the place of factory made pins and where factory made pins are necessary, these will be plated. Main Frames, Swing Shaft Assemblies, etc., are stronger and tougher. Safety has been increased by simple addition of grab-bars to make getting on and off easier; Seats are now of the padded type and are adjustable both vertically and horizontally except where tractor seat is used. Bucket teeth are now of the replaceable type and buckets are more rugged than ever. Adaptability of our Backhoes from one tractor to the next has been greatly increased with separate mounting kits wherever possible. Though we still design our equipment on the philosophy that you should only have to buy equipment big enough for the job you have to do, our equipment is tougher and more durable than ever, efficiency is better than ever.

LD6 SERIES 6 FOOT BACKHOE

The "Mighty Mite" is now mightier than ever. Tough enough to do the jobs that the big guys can't get to: economical enough that anyone who can afford a tractor can afford a backhoe. Maximum safety, performance, reliability, economy features make the LD6 a must.



MD8 SERIES 8 FOOT BACKHOE

Stabilizers are bigger, longer, tougher with swivel feet for better grip; pins as noted above are harder and plated; main frame and swivel assemblies are tougher; buckets are tougher with replaceable teeth, requiring less penetration force; main boom cylinder has been increased over 50% in power. This is no longer an overgrown 6 foot, but a rugged, medium duty backhoe re-designed to bridge the gap between the "Mighty Mite" and our heavy duty 10 foot backhoe.



HD10 SERIES 10 FOOT BACKHOE

This is the one...the backhoe the light commercial and industrial user has been looking for. This is a tractor mounted backhoe meaning greater versatility for your tractor making it more than just a power pack. Over a fourteen foot reach, digging depth to spare, and a lift capacity more than double our competition, rugged design, safe 180 degree swing, control features you expect in a commercial backhoe, all add up to the most economical package in backhoe design available on the market today.

BACKHOE SPECIFICATIONS

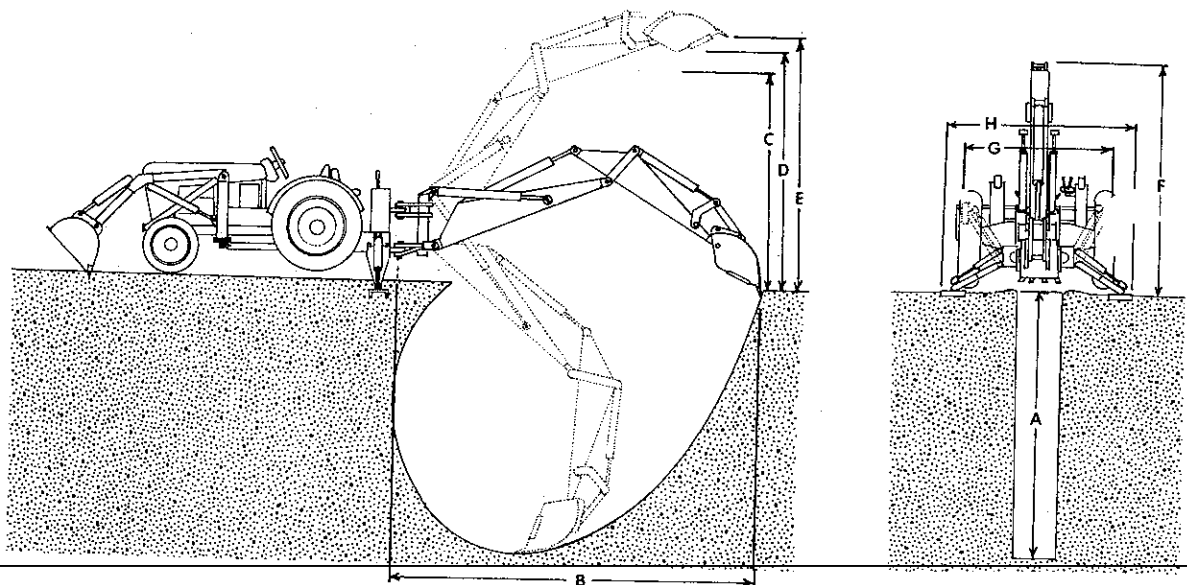
ITEM	LD6 SERIES	MD8 SERIES	HD 10 SERIES
OPERATING CRITERIA:			
Digging Depth: (A) (2 Ft. Flat Bottom)	6 Ft. (182.9cm)	8.0 ft. (243.84 cm)	10.5 Ft. (320.04cm)
Digging Radius: (B)	9 Ft. (274.3cm)	11 Ft. 2 In. (340.36cm)	14.0 Ft. (426.72cm)
Bucket Clearance:			
60° Rotation: (C)	49.5 In. (125.73cm)	57.25 In. (145.41cm)	78.25 In. (198.75cm)
40° Rotation: (D)	62.0 In. (157.48cm)	78.0 In. (198.12cm)	112.0 In. (198.75cm)
Max. Power: (E)	72.0 In. (182.88cm)	96.0 In. (243.84cm)	120.0 In. (304.8cm)
Swing Radius:	135 Degrees	135 Degrees	180 Degrees
Controls:	4-Lever	4-Lever	4-Lever
Transport Height: (F)	6 Ft. (182.9cm)	7 Ft. (213.36cm)	9 Ft. (274.32cm)
Stabalizer Spread:			
Transport: (G)	48 In. (121.92cm)	48 In. (121.92cm)	60 In. (152.40cm)
Operating: (H)			
Digging Force:			
With Bucket Cylinder:	3000 Lbs.	4200 Lbs.	5430 Lbs.
With Dipper Cylinder:	1560 Lbs.	2280 Lbs.	5482 Lbs.

HYDRAULIC SYSTEM DATA

Operating Pressure:	1800 P.S.I.	1800 P.S.I.	
Flow Requirements:	4.0 G.P.M.	4.0 G.P.M.	
Fluid Type:	Type "F"	Type "F"	
System Capacity:	10 Qts.	12 Qts.	
Cylinders:			
Boom:	2.0 x 22½ x 1¼	2.5 x 22½ x 1¼	(2) 3.0 x 33 7/8 x 1½
Crowd (Dipper):	2.0 x 16 x 1¼	2.0 x 22½ x 1¼	3.0 x 32 x 1¼
Bucket:	2.0 x 10 x 1 1/8	2.0 x 16 x 1¼	3.0 x 26 x 1¼
Swing:	2.5 x 6 x 1 1/8	2.5 x 6 x 1 1/8	(2) 3.0 x 9 1/8 x 1¼
Stabalizer:	2.0 x 10 x 1 1/8	2.0 x 10 x 1 1/8	(2) 3.0 x 16 x 1½

CYCLE TIMES

Bucket Open:	3.0 sec.	3.5 sec.	3.5 sec.
Bucket Closed:	3.5 sec.	4.5 sec.	4.8 sec.
Dipper Open:	2.5 sec.	4.0 sec.	4.5 sec.
Dipper Closed:	3.0 sec.	5.0 sec.	5.5 sec.
Boom Up:	6.0 sec.	6.5 sec.	9.0 sec.
Boom Down:	4.5 sec.	5.0 sec.	8.0 sec.
Boom Right:	3.0 sec.	3.0 sec.	3.5 sec.
Boom Left:	3.0 sec.	3.0 sec.	3.5 sec.



* May vary with individual tractor model due to system efficiency, tire size, etc.

PRODUCT DIRECTORY

BACKHOES

TRACTOR MODEL	BACKHOE MODEL NO.			PUMP KIT	HYDR. KIT	MOUNTING KIT	BELLY BRACKET	NOTES
	6 Ft.	8 Ft.	10 Ft.					
ALLIS CHALMERS								
620/720	LD6	MD8		PK30		MK30		1,2
5020	LD6	MD8			HK44	MK44		2, 4, 5
5030		MD8			HK44	MK45		2, 4, 5, 6
5040		MD8			HK49	MK49	BB49	2, 3, 5, 6
ARIENS								
S14-S18	LD6			PK25		MK25	BB25	1, 2, 3, 7
BOLENS								
HT20/23	LD6	MD8		PK05		MK05		1,2
CASE								
480C/580C			1057	BPK57				6, 7, 8, 9
DITCH WITCH								
2200/2300 R30	LD6	MD8				MK53 MK58		7
ECONOMY								
Power King	LD6				HK35			
FORD								
125/145/165	LD6			PK31		MK31	BB31	1, 2, 3, 7
195	LD6			PK48		MK48	BB48	1, 2, 3, 7
1100	LD6					MK65		1,2,7
1600	LD6	MD8			HK43	MK43	BB43	2, 3, 5
1700/1900		MD8			HK47	MK47	BB47	2, 3, 5, 6
1300/1500	LD6	MD8			HK51	MK51	BB51	2, 3, 5
2600/3600/4100/4600 SU			1058		HK52	MK52		2, 8, 10, 11
JACOBSEN								
1250/1450/1650	LD6			PK31		MK31	BB31	1, 2, 3, 7
53500	LD6			PK48		MK48	BB48	1, 2, 3, 7
JOHN DEERE								
300 Series	LD6			PK32		MK32	BB32	1, 2, 3, 7
400	LD6			PK40		MK40	BB40	1, 2, 3, 7
850		MD8			HK41	MK42	BB41	2, 3, 5
950		MD8			HK41	MK41	BB41	2, 3, 5
950			1041	BPK41		ADK41		2, 4, 9
2040/2240			1041		HK54	ADK54		5, 6, 7, 8
KUBOTA								
B6100/7100	LD6			PK29		MK29	BB29	1, 2, 3, 7
185/185DT	LD6	MD8			HK70	MK70	BB70	2, 3, 5
245/245DT		MD8			HK70	MK70	BB70	2, 3, 5
295DT		MD8			HK72	MK72	BB72	2, 3, 5
MASSEY FERGUSON								
205-2 / 205-4	LD6				HK44	MK60		2, 4, 5
210-2/210-4	LD6	MD8			HK44	MK44/62		2, 4, 5
220-2 / 220-4	LD6	MD8			HK44	MK63		2, 4, 5
SATOH								
S370 "Beaver"	LD6				HK33	MK33	BB33	2, 3, 5, 7
ST1300 "Buck"	LD6				HK39	MK39	BB39	2, 3, 5, 7
S630 "Bull"		844			HK44		BB44	2, 3, 5, 6
S7500 "Stallion"			1050	BPK50	HK50		BB50	4, 8, 9

TRACTOR MODEL	BACKHOE MODEL NO.			PUMP KIT	HYDR. KIT	MOUNTING KIT	BELLY BRACKET	NOTES
	6 Ft.	8 Ft.	10 Ft.					
SIMPLICITY								
9020/4040/4041	LD6	MD8		PK30		MK30		1, 2
9523	LD6	MD8			HK44	MK44		2, 4, 5
9528		MD8			HK44	MK45		2, 4, 5, 6
YANMAR								
135/155/1550	LD6				HK55	MK55	BB55	2, 3, 5, 7
240/240D		MD8			HK24	MK24	BB24	2, 3, 5, 6
330/330D		MD8			HK41	MK41	BB41	2, 3, 5, 6
330 D			1041	PK01		ADK41		2, 4, 9

NOTES:

1. Pump Kit required for Backhoe operation unless used with Brantly Front End Loader. (Pump Kit supplied with Loader will operate both Loader and Backhoe.)
2. Front End Loader or Front Blade required.
3. Belly Bracket required for use with other than Brantly Loader.
4. For use with Brantly Loader only.
5. Backhoe operates from Tractor hydraulics only.
6. LD6 (6 Ft.) Backhoe not approved for use on this Tractor Model.
7. MD8 (8 Ft.) Backhoe not approved for use on this Tractor Model.
8. HD Series (10 Ft.) Backhoe only.
9. Requires BPK Series (12 GPM) Pump Kit.
10. Backhoe is unique to Tractor Model shown; does not use Mounting Kit.
11. Uses Loader hydraulics (supplied by Tractor Mfg.)
12. With Ford Loaders Use MK 51F, MK 47F, MK 65F

ALTHOUGH EVERY EFFORT HAS BEEN MADE TO ASSURE BACKHOE FIT-UP WITH LOADER SUPPLIED BY TRACTOR MANUFACTURER, BRANTLY MANUFACTURING COMPANY ASSUMES NO RESPONSIBILITY FOR FAILURE TO FIT DUE TO CHANGES IN TRACTOR OR LOADER DESIGN OVER WHICH WE HAVE NO CONTROL.

SHIPPING DATA:

WEIGHT

CRATE DIMENSIONS

LD Series Backhoe	500 Lbs.	25"W x 29"H x 78" L
MD Series Backhoe	700 Lbs.	25"W x 29"H x 84" L
Mounting Kit	225 Lbs.	22"W x 16"H x 81"L
6 Ft. Backhoe w/o Mtg. Kit	650 Lbs.	25"W x 29"H x 78"L
8 Ft. Backhoe w/o Mtg. Kit	850 Lbs.	25"W x 29"H x 84"L
10 Ft. Backhoe	2100 Lbs.	38"W x 46"H x 92"L

LD6 AND MD8 BACKHOES AND ASSOCIATED MOUNTING KITS ARE SHIPPED PAINTED BLACK UNLESS OTHERWISE SPECIFIED AT TIME OR ORDER. OTHER COLORS AVAILABLE (OPTIONAL) AT ADDITIONAL COST.

BUCKET OPTIONS

WIDTH

NO. TEETH

CAPACITY

WEIGHT

LD Series: 615-1	8"	2	.50 cu. ft.	30 Lbs.
615-2	13"	3	1.00 cu. ft.	48 Lbs.
615-3	16"	3	1.25 cu. ft.	56 Lbs.
MD Series: 818-1	8"	2	.75 cu. ft.	38 Lbs.
818-2	13"	3	1.50 cu. ft.	52 Lbs.
818-3	16"	3	2.0 cu. ft.	64 Lbs.
HD Series: 817-2	24"	4	3.25 cu. ft.	98 Lbs.
817-2	37"	7	5.50 cu. ft.	160 Lbs.

NOTE: ALL BUCKET TEETH ARE NOW OF REPLACEABLE TYPE.

FRONT END LOADERS THAT LOVE YOUR TRACTOR...AND WORK!

Tractor huggin' design that supports your tractor rather than using it. The minimum weight for maximum performance. All the weight added to the front end of your tractor more than necessary to do the job you want to do is extra wear and tear on your tractor and gives you nothing in return. Lift capacity rated conservatively, hydraulics are superior to any on the market, attachments allow the broadest possible usage of your loader and tractor. It all adds up to loaders economically priced and job designed. Pins are now either grade 5 plated bolts or factory plated pins. Durability designed in (count your grease zerts) because we want this equipment to last. Pump kits available if you need greater speed.

SL SERIES 500 LB. CAPACITY LOADERS

These little guys can do a monistrous amount of work, getting into places that "big brother" can't reach, without a doubt the most useful tool that you can attach to your tractor regardless of why you own your tractor. Increased boom speed, increased strength where it counted, trim and efficient design, a loader you can depend on.



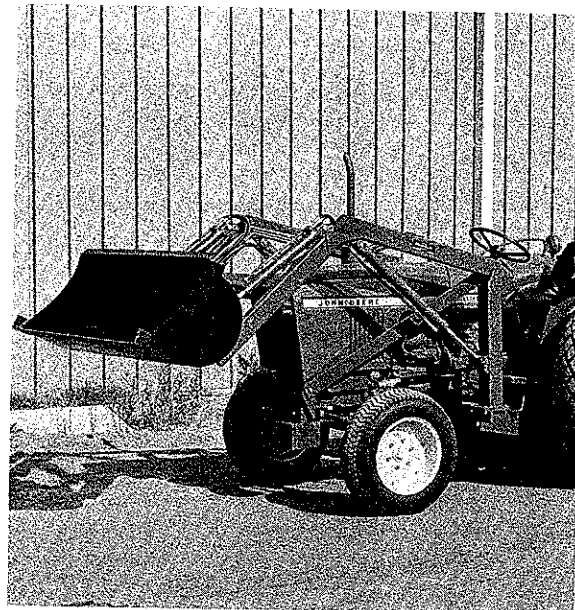
ML SERIES 750 LB. CAPACITY LOADERS

When the SL Series is too small for the tractor and the tractor is too small for the bigger loaders, the ML Series fills the gap and lets you get the most from your tractor. Designed to allow you to get the utmost in lift, speed, efficiency from your tractor without unduly overloading it. It isn't enough to build a good loader if it means wearing out your tractor before its time. We design loaders so both will last. You can buy one cheaper and you can buy one heavier, but you can't buy one better.



LL SERIES 1000 LB. CAPACITY LOADERS

For us, these are the big guys with lift capacities ranging from 1000 pounds up to 1500 pounds. Plenty of strength, bucket capacities, performance to do the jobs your tractor was designed to do. No extra frills for the sake of appearances. Check the specifications and then your pocketbook. We believe this loader is what you are really looking for.



SPECIFICATIONS

FRONT END LOADERS

[TRACTOR MOUNTED]

<u>ITEM</u>	<u>SL SERIES</u>	<u>ML SERIES</u>	<u>LL SERIES</u>
<u>CONTROLS:</u>	Two-Spool Monobloc with Float Position 7 GPM	Two-Spool Monobloc with Float Position 7 GPM	Two-Spool Monobloc with Float Position 30 GPM
<u>LIFT CAPACITY:</u>			
BREAKAWAY:	750 LBS. (337.5 kg)	900 LBS. (405 kg)	1850 LBS. (832.5 kg)
BUCKET CAPACITY:	500 LBS. (225 kg)	750 LBS. (337.5 kg)	1000 LBS. (450 kg)

HYDRAULIC SYSTEM: [REFERENCE TABLE II FOR HYDRAULIC SYSTEM DETAILS]

HYDRAULIC OIL:	AUTOMOTIVE TYPE "F" TRANSMISSION FLUID		
OPERATING PRESSURE:	700 P.S.I.	900 P.S.I.	1000 P.S.I.
CYLINDERS:			
BOOM:	2 x 1 7/8 x 1 1/8 (5.08 x 44.13 x 2.86 cm)	2 x 2 1/2 x 1 1/4 (5.08 x 55.88 x 3.13 cm)	2 x 2 1/2 x 1 1/4 (5.08 x 55.88 x 3.13 cm)
BUCKET:	2 x 1 0 1/2 x 1 1/8 (5.08 x 26.67 x 2.86 cm)	2 x 1 6 x 1 1/4 (5.08 x 40.64 x 3.13 cm)	2 x 1 6 x 1 1/4 (5.08 x 40.64 x 3.13 cm)

***CYCLE TIMES:**

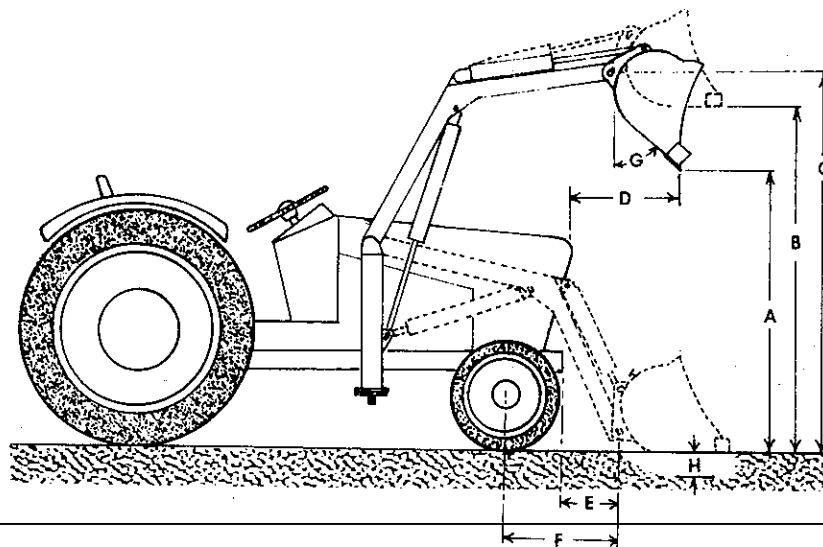
		TRACTOR HYD.	PUMP KIT	TRACTOR HYD.	PUMP KIT
BOOM UP:	7.5 Sec.	9.5 Sec.	4.5 Sec.	9.5 Sec.	4.5 Sec.
BOOM DOWN:	4.5 Sec.	7.5 Sec.	3.5 Sec.	7.5 Sec.	3.5 Sec.
BUCKET OPEN:	4.5 Sec.	6.0 Sec.	3.5 Sec.	6.0 Sec.	3.5 Sec.
BUCKET CLOSED:	4.0 Sec.	5.0 Sec.	2.5 Sec.	5.0 Sec.	2.5 Sec.

***DIMENSIONAL DATA:**

"A" - Fully Dumped	51.0" (129.5 cm)	71.0" (180.34 cm)	80.0 (203.20 cm)
"B" - Fully Raised	62.0" (157.5 cm)	89.0" (226.03 cm)	99.0 (251.40 cm)
"C" - Pivot, Fully Raised	66.0" (167.6 cm)	89.0" (226.03 cm)	99.0 (251.40 cm)
"D" - Reach (Dumped)	12.0" (30.48 cm)	22.0" (55.88 cm)	19.0 (48.26 cm)
"E" - Grill-To-Bucket	9.0" (22.86 cm)	16.0" (40.64 cm)	13.0 (33.02 cm)
"F" - Axle-To-Bucket	18.0" (45.72 cm)	28.0" (71.12 cm)	28.0 (71.12 cm)
"G" - Dumping Angle	55 Degrees	55 Degrees	54. Degrees
"H" - Digging Depth	6.0" (15.24 cm)	6.0" (15.24 cm)	6.0 (15.24 cm)

<u>WEIGHT [SHIPPING]:</u>	350 LBS (157.5 kg)	600 LBS (270 kg)	600 LBS (270 kg)
----------------------------------	--------------------	------------------	------------------

* May vary with individual tractor model due to system efficiency, tire size, etc.



PRODUCT DIRECTORY

FRONT END LOADERS

TRACTOR MODEL	LOADER MODEL	SERIES	PUMP KIT	HYDRAULIC KIT	BUCKETS			PALLET FORK	BALLAST BOX
					40 In.	48 In.	60 In.		
ALLIS CHALMERS									
20/720	530	ML	PK30			510-2	510-4	430-2	
5020/5030	544	LL	*PK44	HK44		510-5	510-6	430-3	
5040	549	LL		HK49		510-5	510-6	430-3	
ARIENS									
S 14/16/17/18	525	SL	PK25		510-3	510-1		430-1	NC25
FMC BOLENS									
HT-20/HT23	505	SL	PK05		510-3	510-1		430-1	NC05
QT-17	506	SL	PK06		510-3	510-1		430-1	NC06
FORD									
125/145/165	531	SL	PK31		510-3	510-1		430-1	
195	548	SL	PK48		510-3	510-1		430-1	
1100	565	SL	PK65		510-3	510-1			
1600	543	LL		HK43		510-5	510-6	430-3	
1900-2	547	LL	PK43			510-5	510-6	430-3	
1700/1300/1500*	551	LL	PK51			510-5	510-6	430-3	
JACOBSEN									
1250/1450/1650	531	SL	PK31		510-3	510-1		430-1	
53500	548	SL	PK48		510-3	510-1		430-1	
JOHN DEERE									
300/314/316/317	532	SL	PK32		510-3	510-1		430-1	NC32
400	540	SL	PK40		510-3	510-1		430-1	NC40
850/950	541*	LL	*PK41	HK41		510-5	510-6	430-3	
KUBOTA									
B6100/B7100	529	SL		HK29	510-3	510-1		430-1	
185/185DT	570	ML	*PK70	HK70		510-2	510-4	430-2	
245/245/245DT	574	ML	*PK70	HK70		510-2	510-4	430-2	
295DT	572	LL	*PK72	HK72		510-5	510-6	430-3	
MASSEY FERGUSON									
210-2/220-2	544	LL	*PK44	HK44		510-5	510-6	430-3	
205-2/205-4	560	LL		HK60		510-5	510-6	430-3	
220-2/220-4	544	LL	PK44	HK44		510-5	510-6	430-3	
SATOH/MITSUBESHI									
S370 Beaver	533	SL		HK33	510-3	510-1		430-1	
ST1300 "Buck"	539	SL		HK39	510-3	510-1		430-1	
S630 Bull	534	LL		HK34		510-5	510-6	430-3	
S7500 "Stallion"	550	LL		HK50		510-5	510-6	430-3	
SIMPLICITY									
9020/4040/4041	530	ML	PK30			510-2	510-4	430-2	
YANMAR									
135/155/155D	555	SL			510-3	510-1		430-1	
140	524	ML	*PK24	HK55		510-2	510-4	430-2	
240D	520	ML	*PK24	HK24		510-2	510-4	430-2	
330	541	LL	*PK03	HK24		510-5	510-6	430-3	
330D	503	LL	*PK03	HK41		510-5	510-6	430-3	

*PUMP KIT OPTIONAL (ADDITIONAL COST). LOADER SUPPLIED WITH HYDRAULIC KIT.

SHIPPING/CRATING INFORMATION

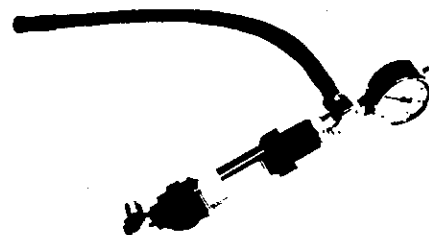
All loaders are shipped disassembled, with bucket, boom, and box of parts as separate pieces. The box of parts is skid mounted while boom & bucket are shipped loose. Shipping weight are as follows:

SERIES	BOX PARTS	BOOM	BUCKET
SL Series (500 Lb.)	190	135	40 Inch — 126
ML Series (750 Lb.)	275	225	48 Inch — 148
LL Series (1000 Lb.)	300	250	60 Inch — 165

All loaders are shipped with mounting instructions and operator/parts manual. Upon completion of mounting, mounting instructions should be inserted in operator's manual since parts unique to a particular loader model are shown only on mounting instructions.

HYDRAULIC TEST KIT

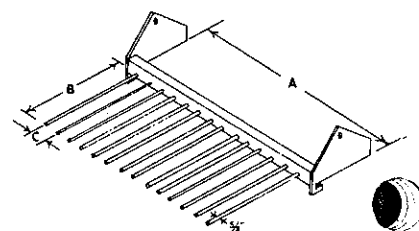
Available for setting/checking hydraulic flow and pressure, which is required to validate warranty. Accuracy is $\pm 5\%$. Unit is rugged and can be used anywhere on systems with less than 3000 P.S.I. pressure and 15 GPM flow rating.



MANURE FORK ATTACHMENT

Available for all bucket sizes. Quick attach for easy conversion from material to manure bucket. Order by bucket size.

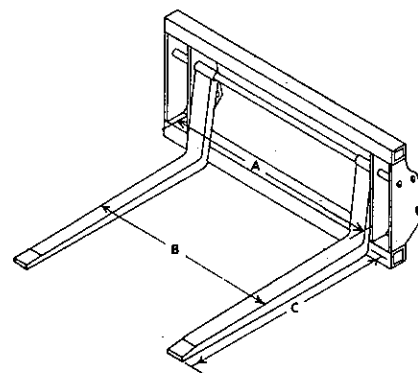
	DIM. "A"	DIM. "B"	DIM. "C"
512-1 (40 Inch)	40"	20"	4"
512-2 (48 Inch)	48"	20"	4"
512-3 (60 Inch)	60"	20"	4"



PALLET FORK ATTACHMENT

Available for all loader models. Attach in place of loader bucket. Order by loader series (size).

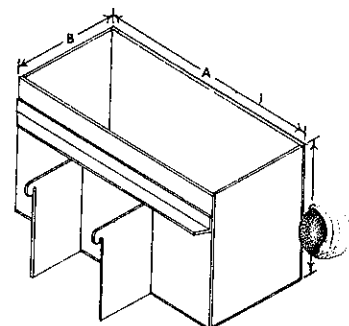
	DIM "A"	DIM. "B"	DIM. "C"
430-1 (SL)	35 $\frac{3}{4}$ "	35 $\frac{1}{8}$ "	26"
430-2 (ML)	28 $\frac{1}{8}$ "	27 $\frac{3}{4}$ "	36"
430-3 (LL)	37 $\frac{5}{8}$ "	37"	36"



BALLAST BOX ATTACHMENT

Available for four 500 lb. Series Loaders this attachment is to be used for rear end ballast with 525, 505, 532, and 540 loaders where tractor wheel weights or other rear end ballast is not used.

	DIM "A"	DIM "B"	DIM "C"
NC25	35 $\frac{1}{2}$ "	12 $\frac{1}{2}$ "	19 $\frac{3}{4}$ "
NC05	35 $\frac{1}{2}$ "	12 $\frac{1}{2}$ "	19 $\frac{3}{4}$ "
NC32	35 $\frac{1}{2}$ "	12 $\frac{1}{2}$ "	19 $\frac{3}{4}$ "
NC40	35 $\frac{1}{2}$ "	12 $\frac{1}{2}$ "	19 $\frac{3}{4}$ "



HYDRAULIC FRONT BLADES

If you want to haul it off, check our front loader specifications, but if you want to move it around, level it, backfill, grade, scrape it, then these blades will give you just what you are looking for. Offering hydraulic lift and down pressure (so it can be used with the backhoe and so you can get down power for more cutting depth) as part of any basic package, Brantly design allows you to add features to suit your own particular needs. Optional hydraulic angle and Snow Kits mean maximum performance and economy. Optional caster arrangement eliminate skid shoe wear when blade is used for snow removal only on hard surface environments. Conversion from landscape to snow blade is a simple matter of removing two bolts if your blade is equipped with Snow Kit. Hardened steel blade offers utmost in wearability that steel can provide. Blade widths designed to fit your tractor, not to overload it. Widths range available: 48", 60", 66", 72", and 78".



SPECIFICATIONS

Type: Front Mounted

Hydraulics: Operate from tractor hydraulics whenever possible

Control Valve: Two-spool monobloc with float position on boom control

CYLINDERS:

48" thru 66":

72" and 78":

BOOM

2" x 6.0' x 1 1/4"

2" x 9.0 x 1 1/4"

ANGLE

2" x 9.0' x 1 1/4"

2" x 9.0' x 1 1/4"

Cutting Edge: Replaceable, hardened steel, 1/2" x 3"

Blade Lockout: Two (2) grade 5 plated bolts, 3/4" x 1 1/2"

Snow Kits:

SK1: two 2" x 7" trip springs with two 4 1/4" diameter x 1" skid shoes

SK2: two 2" x 7" trip springs with two 4 1/4" x 1" Steel caster

Note: Both skid shoes and casters are equipped with replaceable, hardened steel bushings for durability

Mounting: Main Boom anchors to mid-section of tractor with lift cylinder supported at front of tractor

Relief Valve Setting:

Hose Type: 100R1 Rubber Steel Braid

Hydraulic Angle Option: Order HA01 angle kit

HYDRAULIC FRONT BLADES

PRODUCT DIRECTORY

HYDRAULIC FRONT BLADES

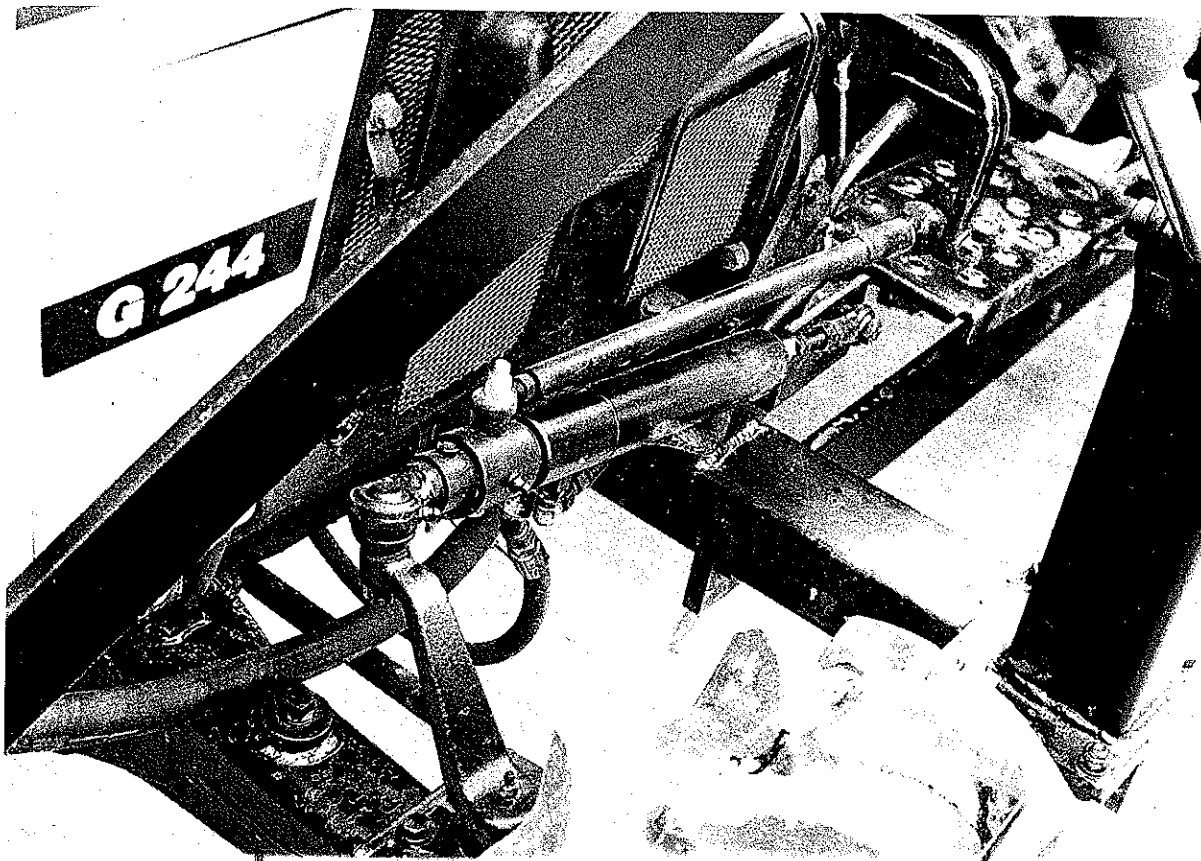
TRACTOR MODEL	FRONT BLADE MODEL NO.		BLADE WIDTH	MOUNTING KIT NO.	NOTES
	HYDRAULIC	MECHANICAL			
ALLIS CHALMERS					
*620/720	H230	M230	48"		
5020-2	H66	M66	66"	BMK44	1,2,3,4,5
5030-2	H72	M72	72"	BMK45	1,2,3,4,5
BOLENS					
HT20/HT23	H205	M205	60"		1,2,4
FORD					
1300-2/1300-4	H60	M60	60"	BMK56	1,2,3,4,5
1500-2/1500-4	H66	M66	66"	BMK51	1,2,3,4,5
1700-2/1700-4	H66	M66	66"	BMK59	1,2,3,4,5
1900-2/1900-4	H72	M72	72"	BMK47	1,2,3,4,5
2600/3600/4100,4600SU	H78	M78	78"	BMK52	1,2,3,4,5,7
	H78	M78	78"	BMK52A	2,3,4,5,6
JOHN DEERE					
*300 Series	H48	M48	48"	BMK32	1,2,3,4,5
*400	H48	M48	48"	BMK40	1,2,3,4,5
850/950	H241	M241	72"		1,2,4,5
MASSEY-FERGUSON					
205-2	H66	M66	66"	BMK60	1,2,3,4,5
205-4	H66	M66	66"	BMK61	1,2,3,4,5
210-2	H72	M72	72"	BMK44	1,2,3,4,5
210-4	H72	M72	72"	BMK62	1,2,3,4,5
220-2	H72	M72	72"	BMK63	1,2,3,4,5
220-4	H72	M72	72"	BMK64	1,2,3,4,5
SATOH					
S370 Beaver	H48	M48	48"	BMK33	1,2,3,4,5
ST1300 Buck	H48	M48	48"	BMK39	1,2,3,4,5
S630 Bull	H72	M72	72"	BMK34	1,2,3,4,5
S7500 Stallion	H78	M78	78"	BMK50	1,2,3,4,5
SIMPLICITY					
9020	H230	M230	48"		1,2,4,5
YANMAR					
240/240D	H240	M240	66"		1,2,4,5
330/330D	H241	M241	72"		1,2,4,5

* PENDING FIT-UP ON TRACTOR

- 1) Uses Brantly Control Valve
- 2) Brantly Backhoe may be used with Front Blade
- 3) Mounting Bracket Additional; order with Front Blade
- 4) Optional Equipment
 - SK01-Snow Kit, includes trip springs and skid shoes
 - SK02-Snow Kit, includes trip springs and casters.
 - HA01-Hydraulic Angle Kit, includes items necessary to add hydraulic angle function to standard blade.
- 5) Uses Tractor Hydraulics
- 6) Uses valve kit supplied by Tractor Manufacturer
- 7) Without Cab only.

POWER STEERING

Increased efficiency, ease of operation, relative ease of installation, makes the Brantly Power Steering a very desirable addition to any tractor. With nearly every vehicle we drive equipped with power steering, there isn't much you can say about this option that can add to what you, the customer, already knows...that he needs and wants one. The Brantly Power Steering takes the place of the steering rods currently existing on your tractor. A new steering arm, connected to the steering control valve, operates the steering unit and provides mechanical steering should you have the hydraulic failure. The base of the power steering is anchored to a fixed bracket (or to the loader subframe) while the other end moves with control pressure to move the steering arm located on the left front wheel of your tractor. In most cases, a flow divider is necessary since the power steering only requires 1.5 GPM. This divider is of the "priority" type meaning that all other systems normally operating from tractor hydraulics are deprived of this amount of fluid flow. Effects on three point hitch operations is not noticeable while operation of a front end loader from tractor hydraulics may result in somewhat reduced speed on the loader.



SPECIFICATIONS:

HYDRAULICS

Cylinder: $2 \times 7 \times 3/4$ or $2 \times 5 \times 3/4$

Valve: Two spool monobloc w/float

Flow Divider: Required except on PS 32, priority type, 1.5 GPM controlled flow: by-pass supplies flow to downstream equipment.

Hoses: 100R1 Rubber steel braid

Return: To tractor reservoir *only*.

Cannot be teed into other returns or to downstream equipment.

MECHANICAL:

Installation: Installs in place of tractor steering arm. Provides for mechanical steering in case of hydraulic system failure.

Steering Force: Requires 4 lbs. or less of force on steering wheel to turn front wheels when sitting still.

PRODUCT DIRECTORY

POWER STEERING

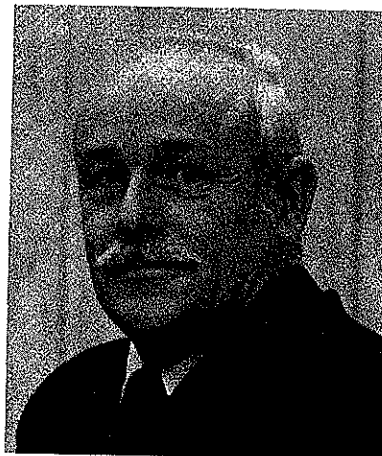
TRACTOR MODEL	POWER STEERING KIT NO.	MOUNTING BRACKET	HYDRAULIC KIT	NOTES
ALLIS CHALMERS *620/720 5020 5030	PS30	MPS30	HK30	3,5 Due to the dual steering arm supplied with these tractors, fit-up of tractors is almost impossible and still maintain a package price that is practical. Work continues in this regard and dealer demand will largely determine Brantly effort in this regard.
FORD 1300-2/1300-4 1500-2/1500-4 1700-2/1700-4 1900-2/1900-4 125/145/165 1600	PS56 PS51 PS59 PS47 PS31 PS43	MPS56 MPS51 MPS59 MPS47	HK56 HK51 HK59 HK47	1,2,4 1,2,4 1,2,4 1,2,4 5,6 5,6
JACOBSEN 1250,1450,1650	PS31			6
JOHN DEERE 314/317 850 950	PS32 PS42 PS41	MPS32 MPS42 MPS41	HK32 HK41 HK41	1,5 1,4 1,4
Power Steering for 300,312,316 no longer available				
KUBOTA B7100 185/185DT 245/245DT	PS29 PS70 PS74		HK29 HK70 HK70	4,6 4,6 4,6
MASSEY-FERGUSON				Power Steering kits for the 205-2/205-4,210-2/210-4,220-220-4 are difficult to supply on a economically practical basis due to the dual steering arm on the tractors. Dealer demand will determine Brantly efforts in this regard.
SATOH S370 Beaver ST1300 Buck S630 Bull	PS33 PS39 PS34		HK33 HK39 HK34	3,4 3,4 3,4
YANMAR 135/155/155D 240 240D 330 330D	PS55 PS40 PS20 PS41 PS03		HK55 HK24 HK24 HK41 HK03	3,4 3,4 3,4 1,4 1,4

NOTES:

- 1) Requires Mounting Bracket when not used with Brantly Front End Loader.
- 2) Power Steering Kit will fit with Loader supplied by Tractor manufacturer.
- 3) Requires mounting bracket regardless of whether tractor is equipped with Brantly Loader.
- 4) Hydraulic Kit required if Tractor not equipped with Loader which operates from Tractor hydraulics.
- 5) Hydraulic Kit required for Power Steering regardless of Loader type.
- 6) Front Loader required; Mounting Bracket supplied with Power Steering Kit.



J.M. ELLIS
Executive Vice President



C.T. (CHUCK) WITT
Vice President
Marketing/Public Relations

YOUR PERSONAL CONTACTS AT BRANTLY MFG. CO

F. FLORES
Production Foreman

J. FLORES
Supervisor-Parts Dept.

TONY HASTON
Purchasing

MITCH JONES
Shipping

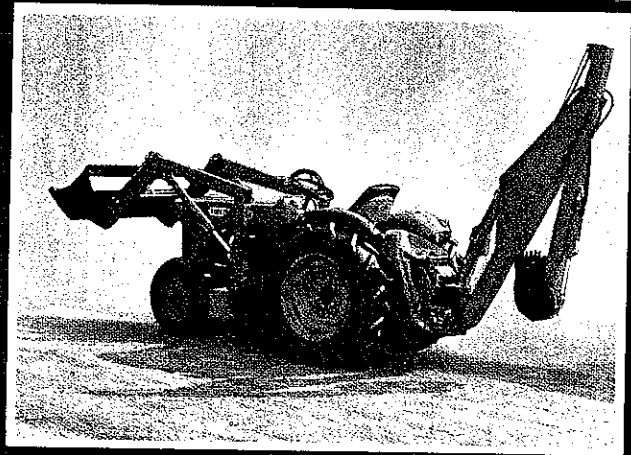
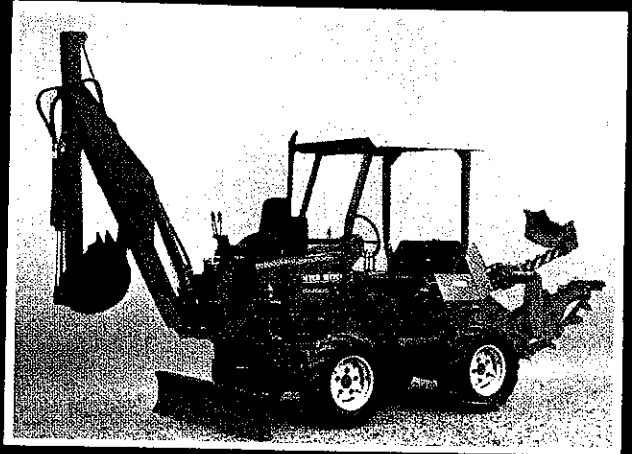
ROYSE HILL
Power Steering Dept.
Parts & Whole Goods

PRESTON HEFNER
Tech. Publications

KEITH HEFNER
Sales-Whole Goods

JUDY FLORES
Accounts Payable

STANLEY YOUNG
Accounts Receivable



Economy • Efficiency • Flexibility

DISTRIBUTED BY:

**B
M
C**

Brantly Mfg. Co.