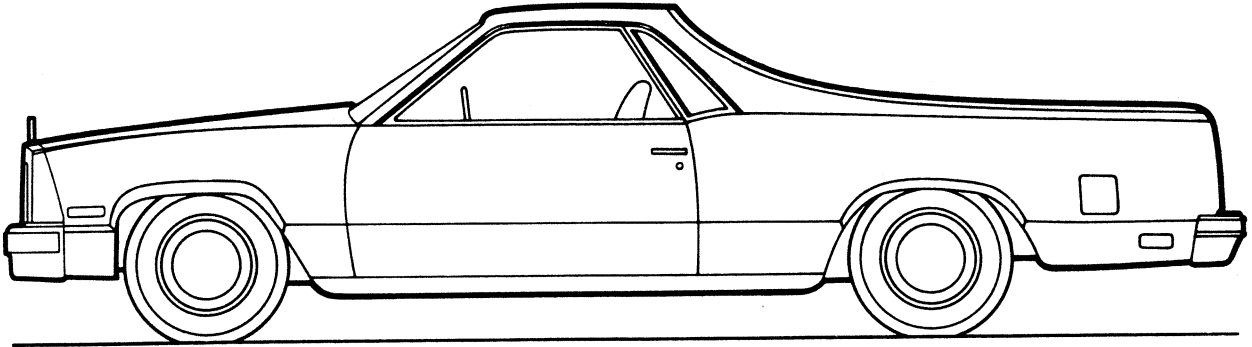


EL CAMINO/CABALLERO**EL CAMINO/CABALLERO MODEL SELECTOR**

MODEL NAME	MODEL NUMBER	BODY ORDERING CODE	RPO NUMBER
EL CAMINO/ CABALLERO	1GW80	—	—
CONQUISTA/ AMARILLO	1GW80	—	D91
SS SPORT DECOR (EL CAMINO ONLY)	1GW80	Z15	—
DIABLO DECOR (CABALLERO ONLY)	1GW80	Z15	—

EL CAMINO/CABALLERO

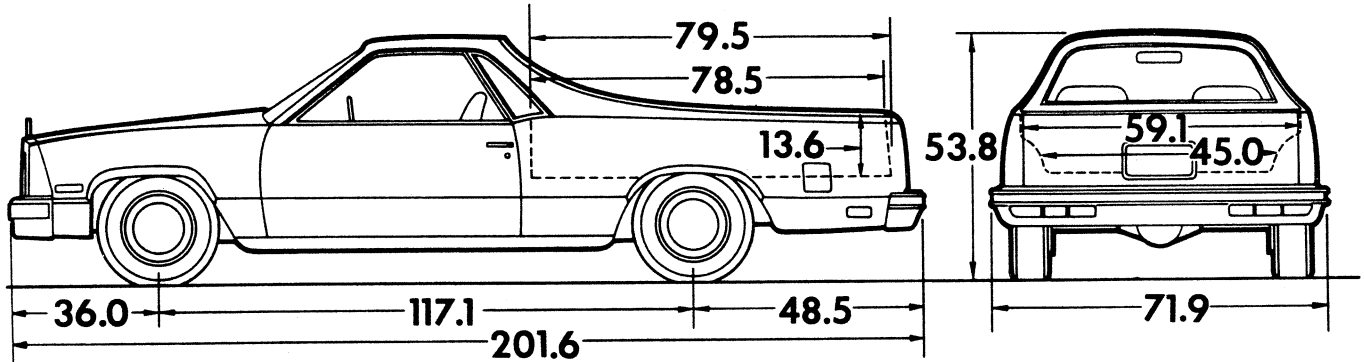
STANDARD SPECIFICATIONS

(See Gray Tab Section for Specification Details)

Engine Base Equip. Air Filter Oil Filter Exhaust System Emission Control Systems	4.3 Liter, 262 EFI V6 Oiled-paper Throwaway Type; .43 qt. Single, steel; Stainless/Aluminized Meet Government Requirements
Suspension, Front Springs @ Ground—Range* Shock Absorbers	Independent; Coil Springs 948/1228 lb. ea. 1" dia.
Suspension, Rear Axle ratio Springs @ Ground—Range* Shock Absorbers	Hypoid; Coil Springs 2.41 1175/1393 lb. ea. 1" dia.; Air Booster Type
Brakes Front Rear Parking	Hydraulic; Self-adjusting; Power Assisted Disc; 10.5" Rotor Drum; 9.5" x 2" Cable to Rear Wheels
Electrical Battery—Freedom II Type —Reserve Capacity Delcotron Generator	12 Volt; Negative Ground Cold Cranking Amps—630 @ 0°F. 90 min. @ 25-amp load 56 amp.
Frame	Carbon Steel; Perimeter Type
Fuel Tank (nominal capacity)	17.4 gal.
Steering Gear Type Linkage	Power Assist; Recirculating Ball Parallelogram
Transmission Shift Location	3-Speed Automatic Steering Column
Tires	(5) P205/75R-14 All Seasons Steel Belted Radial Ply
Wheels	(5) Disc; 14" x 6"

*The capacity of front and rear springs actually installed is dependent on the computed weight of the vehicle with optional equipment as ordered.

EL CAMINO/CABALLERO



Model	Engine No. Cyl.	Curb Weight (lb)			Model Weight (lb)*			Ground Clearance (in.)*	
		Front	Rear	Total	Front	Rear	Total	Front	Rear
1GW80	6	1821	1413	3234	2050	1634	3684	6.9	6.9
1GW80 With Z15	6	1824	1415	3239	2053	1636	3689		

*Dimensions with standard equipment, unloaded.

*Model Weight includes Curb Weight plus occupants (standard seating capacity x 150 lb). Total Model Weight may vary as much as ± 50 lbs. to allow for production build variation.

GVWR SELECTOR

*Engine	*GVW Range (lb)	†GAWR (lb)		Minimum Equipment Required for GVW Range		
		*Front	*Rear	Tires, Front	Tires, Rear	*Chassis Equipment
6	4560 to 4770	2068 to 2189	2491 to 2581	P205/75R-14	P205/75R-14	Standard

†GAWR—Gross Axle Weight Rating.

*The higher ranges shown for GVWR and GAWR, front and rear, reflect capacities of springs which will be installed based on the computed curb weight of the vehicle with optional equipment, passengers and cargo.

EL CAMINO/CABALLERO

POWER TEAMS

ALL STATES EXCEPT CALIFORNIA

ENGINE OPTION CONDITION		AXLE RATIO			
		2.41	2.56	2.73	3.08
WITH NA5 STANDARD EMISSIONS					
LB4	MX1	Std	—	G92	—
	MX0	—	Std	—	G92
LG4	MX1	Std	—	G92	—
	MX0	—	Std	—	G92

CALIFORNIA ONLY

ENGINE OPTION CONDITION		AXLE RATIO			
		2.41	2.56	2.73	3.08
WITH YF5 CALIFORNIA EMISSIONS					
LB4	MX1	Std	—	G92	—
	MX0	—	Std	—	G92
LG4	MX1	Std	—	G92	—
	MX0	—	Std	—	G92

ENGINE RATINGS

ALL STATES EXCEPT CALIFORNIA

SAE Net Ratings	LB4 4.3 Liter 262 EFI V6★	LG4 5.0 Liter 305 4-bbl V8★
Net Horsepower	130 @ 3600 rpm	150 @ 4000 rpm
Net Torque, lb-ft	210 @ 2000 rpm	240 @ 2000 rpm

★Light Duty Emissions

CALIFORNIA ONLY

SAE Net Ratings	LB4 4.3 Liter 262 EFI V6★	LG4 5.0 Liter 305 4-bbl V8★
Net Horsepower	130 @ 3600 rpm	150 @ 4000 rpm
Net Torque, lb-ft	210 @ 2000 rpm	240 @ 2000 rpm

★Light Duty Emissions

EL CAMINO

1986 VEHICLES WITH STANDARD EQUIPMENT

Prices shown are effective with initial shipments of 1986 model motor vehicles

Description	Model Number	Body Code	Wheel Base	Factory D&H(a)	List Price	Mfr's Suggested Retail Price★	Group Number
◆ 6-Cylinder 4.3 Liter E.F.I. V6 Gasoline Engine-Engine Ordering Code LB4							
El Camino							
3-Passenger	1GW80		117.1"	N.A.	9572.00	9572.00	12
El Camino SS Sport							
3-Passenger	1GW80	Z15	117.1"	N.A.	9885.00	9885.00	12

- ★ Manufacturer's Suggested Retail Prices do not include applicable destination charges, state and local taxes, license fees, optional equipment or special items or services.
- ◆ Refer to Dealer Order Guide for California Requirements.

OPTIONS WHEN INSTALLED BY GENERAL MOTORS

Prices shown are effective with initial shipments of 1986 model motor vehicles

Description	Option Number	Factory D&H(a)	List Price	Mfr's Suggested Retail Price◇
Conquista/Amarillo: (See Conquista/Amarillo Interior and Exterior Color Selection Chart for color availability and ordering information). Not available when Z15 SS Sport/Diablo Decor is specified. Includes BX8 Front Fender, Body Side and Tailgate Moldings. Includes Special Two-Tone Paint				
	D91	N.A.	225.00	225.00
Seat Trim: (See Interior and Exterior Color Selection Chart for availability and ordering information).				
C**1 Cloth Bench Seat		NO ADDITIONAL CHARGE		
C**2 Cloth Bucket Seat		N.A.	147.00	147.00
C**3 Cloth 55/45 Seat. Includes single folding armrest		N.A.	133.00	133.00
V**1 Vinyl Bench Seat		N.A.	28.00	28.00
F**3 Custom Cloth CL 55/45 Seat Includes single folding armrest		N.A.	305.00	305.00
Paints, Exterior: Solid. (See Interior and Exterior Color Selection Chart for ordering information)				
NO ADDITIONAL CHARGE				
Emission Systems: Dealer Note - One of the following emission options must be specified. (See Power Teams Chart for availability and specifications)				
California Emission Requirements. Includes all testing, equipment and/or certification necessary for registration in the State of California	YF5	N.A.	99.00	99.00
Standard Emission Equipment	NA5	NO ADDITIONAL CHARGE		
Engines: (See Power Teams Chart for availability and specifications).				
Gasoline.				
4.3 Liter E.F.I. V6	LB4	NO ADDITIONAL CHARGE		
5.0 Liter 4 BBL V8	LG4	N.A.	390.00	390.00
Transmissions:				
3-Speed Automatic. (Standard)	MX1	NO ADDITIONAL CHARGE		
4-Speed Automatic with Overdrive	MX0	N.A.	175.00	175.00
Axles, Rear: (See Power Team Chart for availability).				
Limited Slip Differential	G80	N.A.	100.00	100.00
Performance Ratio	G92	N.A.	21.00	21.00
Tires:				
P205/75R-14 All Seasons Steel Belted Radial Ply Blackwall (Standard)	QFT	NO ADDITIONAL CHARGE		
P205/75R-14 All Seasons Steel Belted Radial Ply Whitewall	QJR	N.C.	66.00	66.00
P205/75R-14 All Seasons Steel Belted Radial Ply White Lettered	QSA	N.C.	88.00	88.00

- (a) D & H Charges on vehicle and optional equipment include reimbursement to ordering Division for any tax that it has paid, incurred or agreed to pay thereon.
- ◇ State and local taxes not included.

EL CAMINO/CABALLERO

OPTIONS WHEN INSTALLED BY GENERAL MOTORS

Prices shown are effective with initial shipments of 1986 model motor vehicles

Description	Option Number	Factory D&H(a)	List Price	Mfr's Suggested Retail Price◇
OTHER OPTIONS				
Air Conditioning: Includes increased cooling	C60	N.A.	750.00	750.00
Battery: <i>Heavy-Duty.</i> Not available when LB4 4.3 Liter Engine is specified	UA1	N.A.	26.00	26.00
Bumper Equipment:				
<i>Bumper Rub Strips.</i> Front and Rear. Includes black resilient impact strips	VE5	N.A.	50.00	50.00
<i>Guards, Bumper.</i> Front and Rear	V30	N.A.	60.00	60.00
Console: <i>Front Compartment Floor.</i> Available only when bucket seats are specified.	D55	N.A.	110.00	110.00
Cooling, Heavy-Duty:				
Without C60 Air Conditioning	V08	N.A.	70.00	70.00
With C60 Air Conditioning	V08	N.A.	40.00	40.00
Door Lock System, Power: Electric	AU3	N.A.	130.00	130.00
Floor Covering: <i>Mats, Two Color-Keyed Floor.</i>	B32	N.A.	17.00	17.00
Gage Package With Trip Odometer: Includes voltmeter, temperature and oil pressure gages	U39	N.A.	69.00	69.00
Glass: <i>Tinted.</i> All windows	A01	N.A.	115.00	115.00
Headlamps, Halogen: <i>High and Low Beams</i>	TT4	N.A.	25.00	25.00
Heater, Engine Block: 600 watts, 120 volts.	K05	N.A.	20.00	20.00
Lighting, Auxiliary: Includes headlamp warning buzzer and underhood lights	TR9	N.A.	20.00	20.00
Mirrors: <i>Sport, LH Remote and RH Manual.</i> Included when Z15 SS Sport Decor/Diablo Decor is specified	D35	N.A.	61.00	61.00
Moldings:				
<i>Body Side, Deluxe.</i> Black color molding only. Not available when Z15 SS Sport Decor/Diablo Decor or D91 Conquista/Amarillo is specified	BW2	N.A.	59.00	59.00
<i>Door Edge Guards</i>	B93	N.A.	15.00	15.00
<i>Front Fender, Body Side and Tailgate.</i> Not available when Z15 SS Sport Decor/Diablo Decor or BW2 Deluxe Body Side Moldings is specified. Included when D91 Conquista/Amarillo is specified	BX8	N.A.	90.00	90.00
Preliminary Price Information	B3W	N.A.	N.A.	N.A.
Radio Equipment:				
<i>AM Radio</i>	U63	N.A.	112.00	112.00
<i>AM Radio and Digital Clock</i>	UL6	N.A.	151.00	151.00
<i>Electronically Tuned AM/FM Stereo Radio with Seek and Scan</i>	UK4	N.A.	258.00	258.00
<i>Electronically Tuned AM/FM Stereo Radio with Seek and Scan and Digital Clock</i>	UM7	N.A.	297.00	297.00
<i>Electronically Tuned AM/FM Stereo Radio with Seek and Scan, Stereo Cassette Tape and Digital Clock</i>	UM6	N.A.	419.00	419.00
<i>Electronically Tuned AM Stereo/FM Stereo with Seek and Scan, Stereo Cassette Tape with Search and Repeat, Graphic Equalizer and Digital Clock</i>	UX1	N.A.	569.00	569.00
<i>Fixed Mast Antenna.</i> Included with Radio	U73	N.A.	41.00	41.00
Rails, Cargo Box Side	D73	N.A.	94.00	94.00
Speed Control, Electronic: <i>With resume speed</i>	K34	N.A.	175.00	175.00
Steering Wheel: <i>Comfortilt</i>	N33	N.A.	115.00	115.00
Suspension Sport.	F41	N.A.	16.00	16.00
Tachometer: Available only when U39 Gage Package is specified	U16	N.A.	90.00	90.00
Tank, Fuel: 22 gallons.	N23	N.A.	27.00	27.00
Tie-Downs, Cargo Box	AV3	N.A.	25.00	25.00
Wheel Trim:				
<i>Wheel Covers with locks, Wire</i>	N91	N.A.	199.00	199.00
<i>Wheels, Rally.</i> Included when Z15 SS Sport Decor/Diablo Decor is specified. Includes styled wheels, special hub caps and trim rings	ZJ7	N.A.	56.00	56.00
Windows, Power: <i>Electric</i>	A31	N.A.	195.00	195.00
Windshield Wiper System: <i>Intermittent.</i>	CD4	N.A.	50.00	50.00

(a) D & H Charges on vehicle and optional equipment include reimbursement to ordering Division for any tax that it has paid, incurred or agreed to pay thereon.

◇ State and local taxes not included.

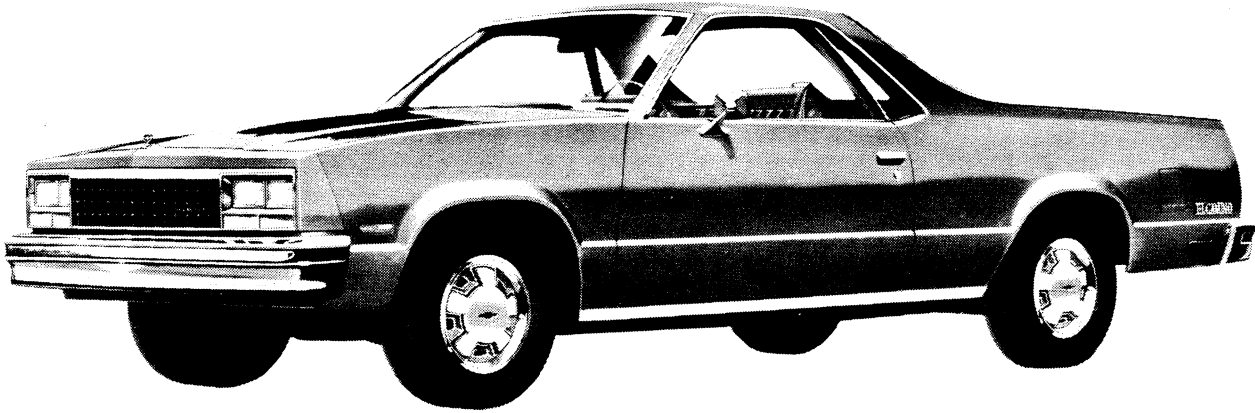
EL CAMINO/CABALLERO

CAB & BODY FEATURES COLOR & TRIM CHARTS TWO-TONES

EL CAMINO/CABALLERO

STANDARD MODEL

The Standard model includes the following items as standard equipment.



EXTERIOR

● **Bright Appearance Items:**

"CHEVROLET/GMC" letters in lower LH corner of grille
Chevrolet Bow Tie/GMC letters at center of grille header panel and in center of wheel covers
"El Camino/Caballero" nameplates: Sides of rear fenders
Chrome front and rear bumpers
Door lock cylinders
Door lock handles
Grille and moldings
Headlight bezels
Headlamp and parking lamp moldings
LH side rearview mirror
License pocket moldings
Upper pickup box, rear sail panel and rear roof moldings
Quarter window moldings
Rocker panel moldings
Roof drip moldings
Side door belt bead moldings
Wheel covers
Windshield and back window reveal moldings

● **Color:** See Interior and Exterior Color Selection Chart

● **Door Opening and Locking Methods:**

Side doors; lift bar latch release with key lock cylinder
Tailgate; single pivot handle on inside surface of tailgate, double latch

● **Doors:** RH and LH side doors and tailgate

● **Glass:** Windshield, drop glass in each side door. Fixed side quarter windows, and back glass

● **Grille:** Plastic construction; chrome plated

● **Horn:** Dual note

● **Lights:**

Combination parking/direction. Two front; dual lens
Combination tail/stop/direction and backup, mounted in bumper
Headlights. Dual rectangular, RH and LH
License plate. Single rear
Side marker and reflectors. 2 rear, quarter panel mounted;
2 front fender mounted,

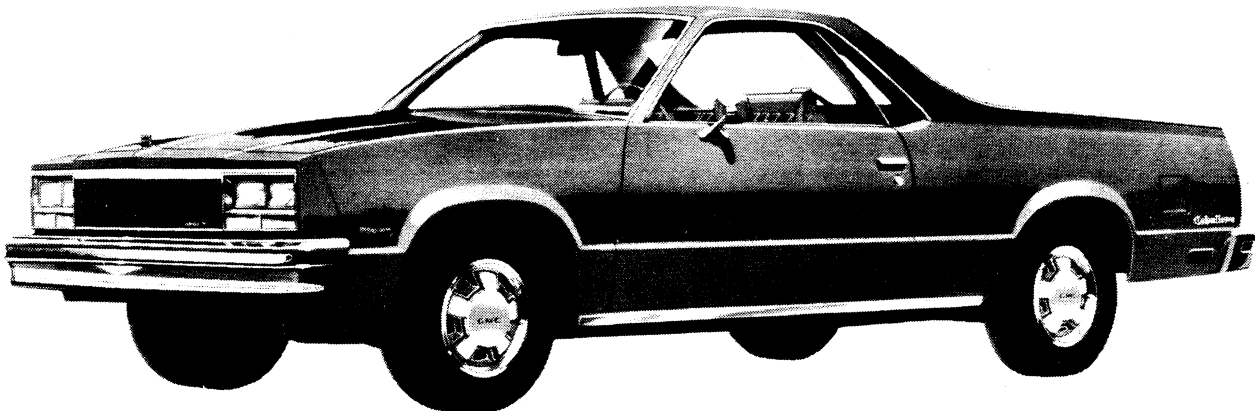
● **Mirror:** LH chrome fixed arm with rectangular head

● **Side Door Beams:** Steel beam running full width inside each side door

● **Tools:** Mechanical jack; wheel wrench

● **Wheels:** 14" x 6"; 5 bolt, 4 $\frac{3}{4}$ " bolt circle

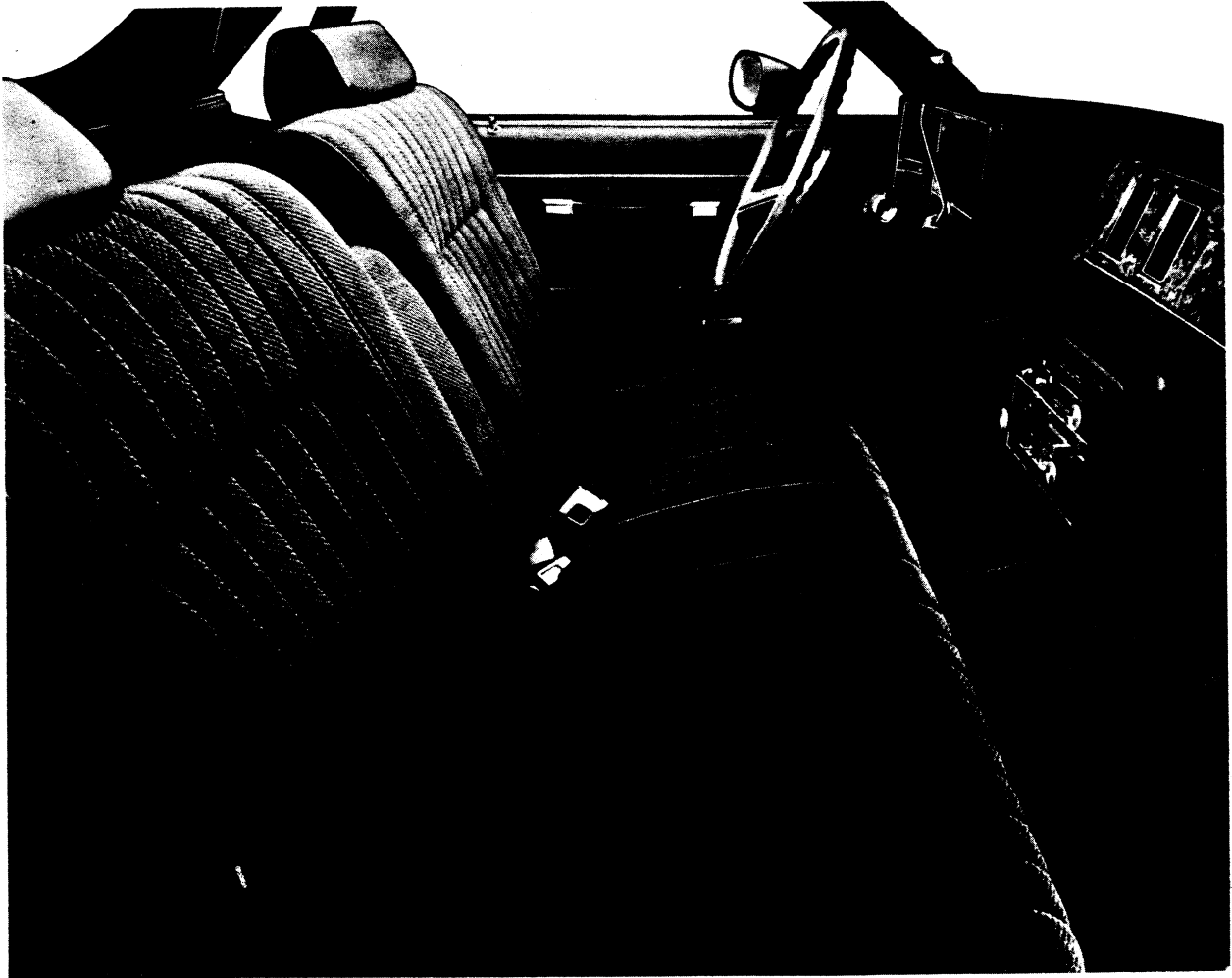
● **Windshield Wipers and Washers:** Electric; 2-speed wipers
Hide-A-Way blades and arms



EL CAMINO/CABALLERO

STANDARD MODEL

The Standard model includes the following items as standard equipment.



INTERIOR

- **Air Vents:** RH and LH cowl side; individually controlled (not with air conditioning)
- **Armrests:** RH and LH full padding
- **Ashtray:** Lighted
- **Audible Warning:** Ignition key removal warning; activated by opening side door with key in switch; driver's seat belt unattached warning
- **Carpeting:** Color-keyed nylon cut pile
- **Cigarette Lighter**
- **Colors, Interior:**
See Interior Color Selection Charts
- **Courtesy Light Switches:** Door-actuated
- **Door Locks:** Inside; bright pushbutton lock/release
- **Door Seals:** Closed-cell-type rubber
- **Flow-through Ventilation System**
- **Glove Compartment:** Lighted; with lock
- **Headliner:** Cloth over foam padding
- **Heater and Defroster:** Deluxe-air
- **Instruments:**
Gages: Speedometer; odometer and fuel
Switches: Exterior lights, instrument lights, dome light, wiper-washer (column operated), headlight beam (column operated), ignition, directional signal with lane change position, hazard warning and heater. Pictured symbols for heater/AC fan, defroster, hazard warning control, wiper/washer, light switch and rear window defogger
Warning Lights: Generator, oil pressure, engine temperature, brake warning, seat belt, direction signals and high beam
- **Instrument Panel:** Fiberglass filled plastic; energy absorbing with simulated leather rectangular applique and nameplate
- **Instrument Panel Knobs:** Black; aluminum faced
- **Insulation and Sound Deadening:** Dash (firewall), under floor mat and other strategic points
- **Interior Lights:** Instrument and dome operated by main light switch
- **Mirror, Rearview:** Inside, 10" wide, day-night type
- **Scuff Plates:** Side door opening protection and floor mat retainer
- **Seat:** Full width, choice of 1) cloth or 2) textured all-vinyl trim (at extra cost), includes center armrest
- **Seat and Shoulder Belts:** 3 sets of seat belts; 2 shoulder belts in outboard positions; includes warning light and audible warning for driver's seating position
- **Spare Tire and Carrier:** Stored horizontally behind seat on passenger side; includes easy-out extractor
- **Steering Lock:** Column-mounted combination ignition switch, transmission lock, steering lock and accessory switch
- **Steering Wheel:** Color-keyed grained plastic; soft rim with simulated leather insert. "Chevrolet" bow tie/"GMC" letters on leather-like center shroud; energy absorbing, locking column
- **Sunshades:** RH and LH padded; cloth covered
- **Trim Panels:** Cloth/vinyl door trim panels with pull straps and bright trim, vinyl-coated cowl side panels and cloth/foam padded headliner
- **Window Regulator Knobs:** Clear plastic
- **Windshield Pillar Moldings:** Color-keyed

EL CAMINO/CABALLERO

EL CAMINO SS SPORT DECOR—Z15/CABALLERO DIABLO DECOR—Z15

The SS Sport Decor/Diablo Decor models include all items listed for the Standard model plus the following additions or substitutions.



EXTERIOR

- **Bright Appearance Items:**
Delete rocker panel moldings
- **Front Air Dam:** Painted lower body color
- **Mirrors:** Sport type. LH and RH, painted upper body color
- **Ornamentation:** Vinyl pinstriping decal to cover paint break lines.
- **Quarter Window Moldings:** Black
- **Paint:** Accent paint color on lower body
- **Rally Wheels:** Gray and silver accents; includes bright trim ring.

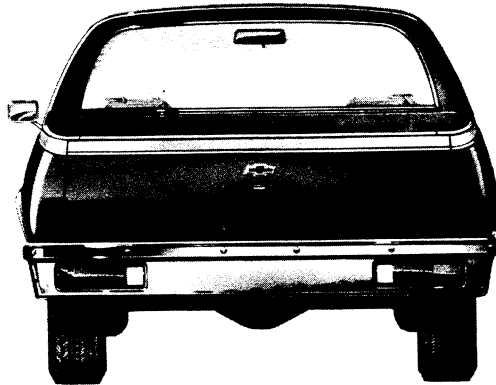
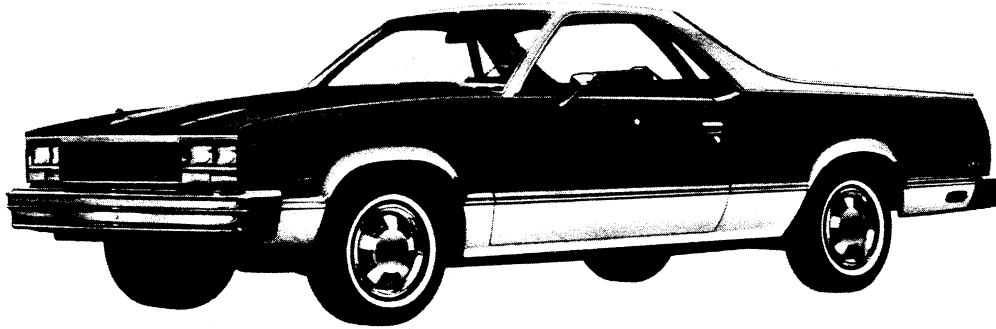
INTERIOR

- **Ornamentation:** "Super Sport/Diablo" nameplate on instrument panel above glove compartment door

EL CAMINO/CABALLERO

EL CAMINO/CABALLERO WITH CONQUISTA/AMARILLO OPTION—RPO D91

This option includes all items listed for the standard model plus the following additions or substitutions.



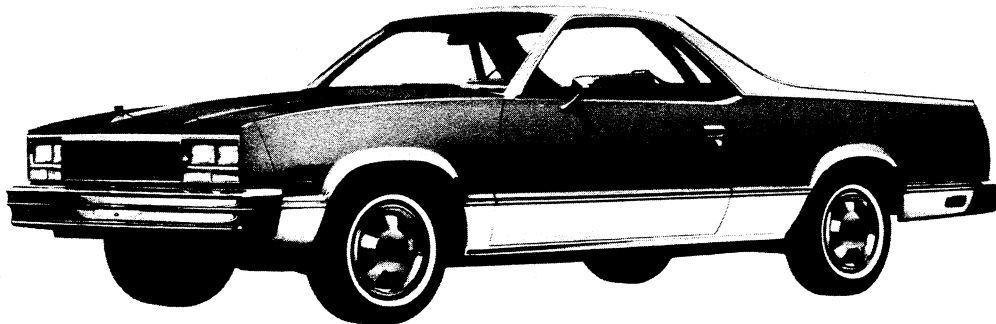
EXTERIOR

- Bright paint break moldings on front fenders, bodysides, tailgate and sides of pickup box
- "Conquista/Amarillo" decal on RH upper portion of tailgate

- Special two-tone paint

INTERIOR

- "Conquista/Amarillo" nameplate on instrument panel above glove compartment door

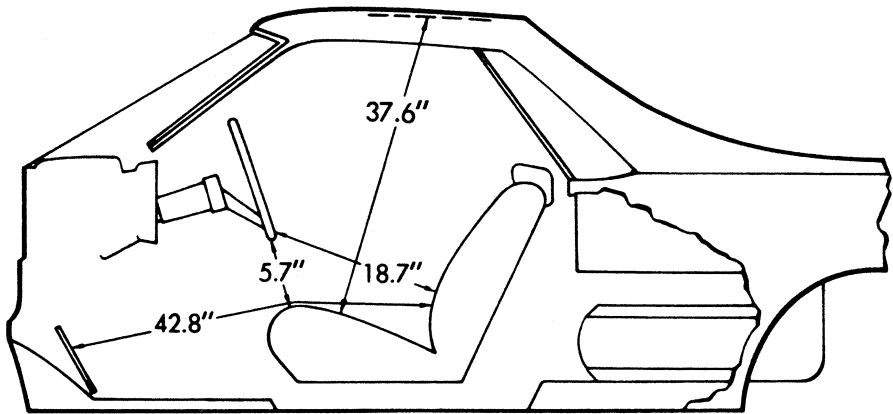
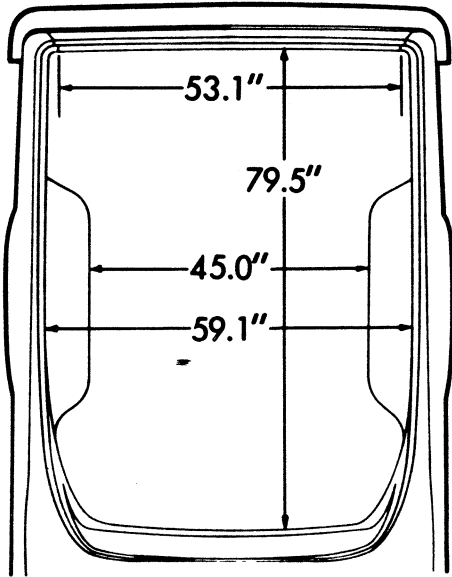
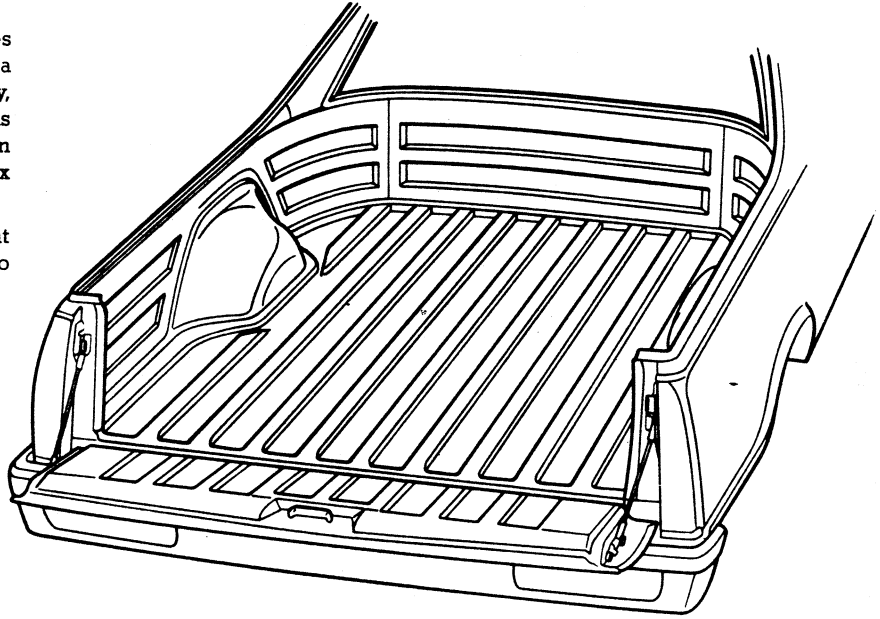


EL CAMINO/CABALLERO

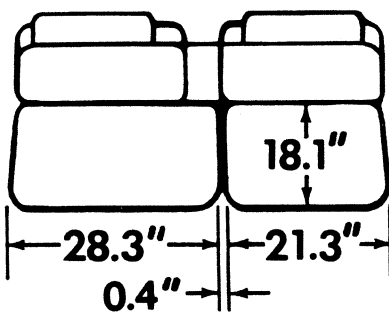
DIMENSIONS

The El Camino/Caballero pickup box features double-wall construction on the side panels and a ribbed all-steel floor. The tailgate, featuring easy, one-hand operation and grain-tight seal, also has double-wall construction and forms a continuation of the ribbed floor when lowered. The pickup box has a capacity of approximately 35.5 cubic feet.

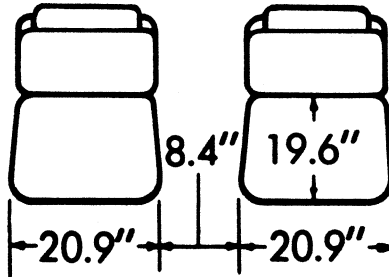
All El Camino/Caballero models have a bright metal molding at the top of the box and tailgate to prevent paint chipping when loading or unloading.



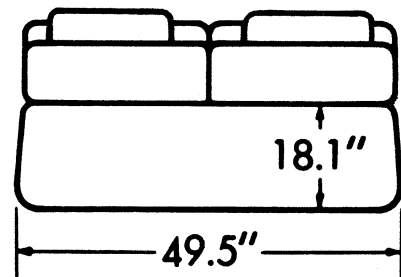
CAB DIMENSIONS*



55/45 SEAT W/ARMREST



BUCKET SEAT



BENCH SEAT

*All interior dimensions measured with seat in rear position.

EL CAMINO/CABALLERO

INTERIOR AND EXTERIOR COLOR AVAILABILITY CHARTS

Please Note: The exterior and interior combinations shown in the charts below and designated as recommended (R), represent the ideal combinations. Those that are shown as acceptable (A) are attractive, but less desirable than the recommended combinations.

COLOR AND TRIM SELECTION

INTERIOR TRIM COLOR		Blue	Gray	Lt. Green	Maroon	Saddle
MODEL	SEAT TYPE					
1GW80	Cloth Bench	CDD1	CQQ1	CGG1	CFF1	CCC1
	Cloth Bucket	CDD2	CQQ2		CFF2	
	Cloth 55/45	CDD3	CQQ3	CGG3	CFF3	CCC3
	Vinyl Bench	VDD1	VQQ1		VFF1	VCC1
	Custom Cloth 55/45 (CL)	FDD3	FQQ3	FGG3	FFF3	FCC3

WITH D91 CONQUISTA/AMARILLO (D60 Non-Recommended Color Combination Not Permitted)

EXTERIOR PAINT COLOR	Color Code						
	1	2					
Blue, Light (Metallic) & Dark Blue (Metallic)	25	31		R	A		
Brown, Medium (Metallic) & Light Brown (Metallic)	62	58					R
Gray, Medium (Metallic) & Silver (Metallic)	15	12		A	R		R
Silver (Metallic) & Dark Maroon (Metallic)	12	79			A		R
Silver (Metallic) & Black	12	19			R		R

WITH Z15 SS SPORT DECOR (Chevrolet Only) or Z15 DIABLO DECOR (GMC Only) (D60 Non-Recommended Color Combination Not Permitted)

EXTERIOR PAINT COLOR	Color Code		Decal Color Scheme				
	1	2					
Black & Silver (Metallic)	19	12	Silver		R		R
Blue, Dark (Metallic) & Light Blue (Metallic)	31	25	Blue	R	A		
Brown, Light (Metallic) & Medium Brown (Metallic)	58	62	Brown				R
Maroon, Dark (Metallic) & Silver (Metallic)	79	12	Silver		A		R
Silver (Metallic) & Medium Gray (Metallic)	12	15	Black	A	R		R

WITHOUT D91 or Z15 (D60 Non-Recommended Color Combination Is Permitted)

EXTERIOR PAINT COLOR	Color Code						
	1	2					
Black	19	19			R		R
Blue, Dark (Metallic)	31	31		R	A		A
Blue, Light (Metallic)	25	25		R			
Brown, Light (Metallic)	58	58					R
Brown, Medium (Metallic)	62	62					R
Gray, Medium (Metallic)	15	15			R		R
Green, Light (Metallic)	43	43				R	
Maroon (Metallic)	71	71					R
Maroon, Dark (Metallic)	79	79			A		R
Silver (Metallic)	12	12		R	R		R
White	11	11		R	R	R	R
Yellow Beige	54	54					R

NOTES

STANDARD VALUE FEATURES



- 4.3 Liter Electronic Fuel Injection (EFI) V6 gas engine for impressive performance.
- Air-adjustable rear shocks help to level the load.
- All-season steel-belted radial tires for good traction and tread life.
- Integral power steering.
- Vacuum power brakes.
- Chromed front and rear bumpers.
- Frameless door glass and thin pillars.
- Bright trim on pickup box, wheel opening, rocker panel, quarter window and roof drip moldings.
- Full wheel covers for attractive appearance.
- Black windshield and rear window moldings.
- Chevrolet, El Camino and 4.3 Fuel Injection identification.
- Stand-up hood ornament.
- Fluidic windshield wipers provide improved spray pattern for better cleaning.
- Notchback bench seat with armrest in knit cloth or vinyl upholstery.
- Black-accented instrument panel trim plates with gages, warning lights and controls identified with international symbols.
- Energy-absorbing steering column with locking feature.
- Column-mounted Smart Switch controls turn signals, headlight beam and washer/wipers for driver convenience.
- Nylon cut-pile carpeting, color-keyed to trim for appearance.
- Deluxe cloth/vinyl door and side panels with carpeted lower scuff area.
- Lighted ashtray and glove compartment for convenience.
- Instrument panel courtesy light for convenience.
- 10" prismatic rearview mirror.
- Door-actuated dome lamp.
- Vinyl door-pull straps—all doors.
- Easy access and removal of spare tire from behind the passenger seat.
- Spacious hidden storage area behind seat and under portion of pickup box floor.
- Cloth-covered foam-padded headliner for good appearance and improved acoustics.
- Color-keyed pillar garnish moldings.
- Extensive anti-corrosion treatments.

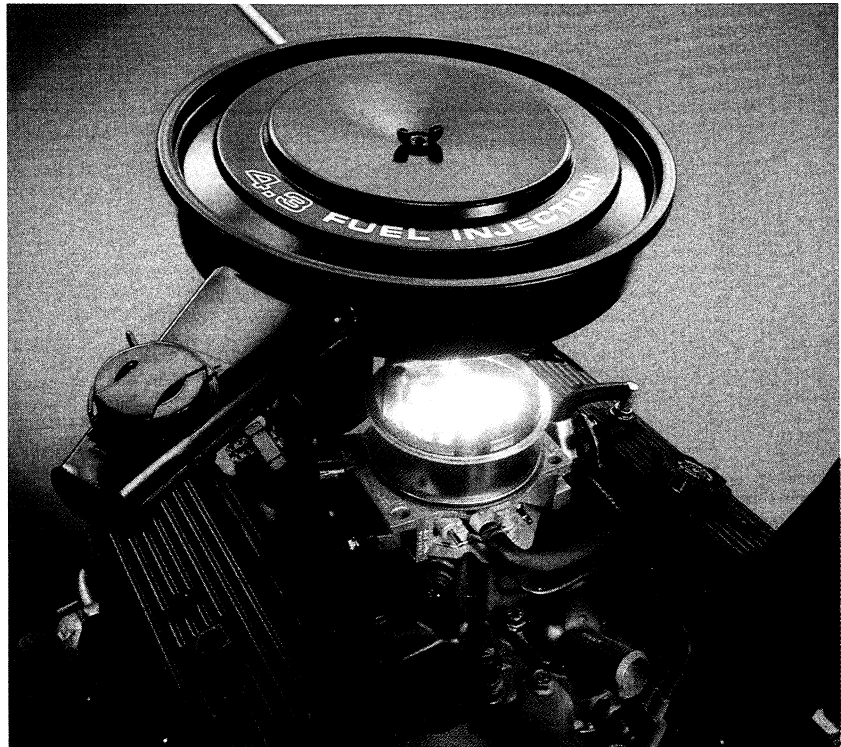
ENGINE VALUE FEATURES

The 4.3 Liter V6 gas engine is a naturally aspirated 90° V6 with 4-cycle design. Advantages of this engine include:

- Efficiency of Electronic Fuel Injection.
- Improved mixing of fuel and air as a result of the swirl-port induction system.
- More complete fuel burning due to the centralized spark plug combustion chamber.
- Volumetric efficiency is the major result of the higher compression ratio. The higher compression ratio is coupled with the Electronic Spark Control (ESC) to prevent spark knock.

The basic features of the 4.3 Liter V6 gas engine are:

- Electronic Fuel Injection.
- 9.3 to 1 compression ratio with Electronic Spark Control (ESC) to sense and prevent spark knock.
- Swirl-port cylinder heads for improved mixing of fuel and air.
- Copper-core spark plugs help prevent plug fouling.
- Single-point air injection.

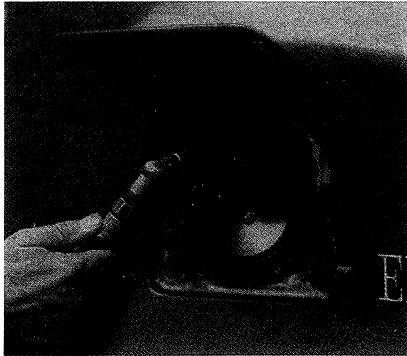


- Even firing results in smooth operation and allows a low idle speed.
- Stone-ground, micro-finished crankshaft.
- Tubular stainless steel exhaust manifolds.
- Low-tension oil rings for reduced friction.
- Cassette water pump seal.
- Net horsepower: 140 @ 4,000 RPM. Net torque (lb.-ft.): 225 @ 2,000 RPM.

A WORD ABOUT ENGINES

Chevrolet trucks are equipped with engines produced at facilities operated by GM car and truck groups, subsidiaries or affiliated companies worldwide.

CHASSIS AND BODY VALUE FEATURES



ALL-SEASON STEEL-BELTED RADIAL TIRES

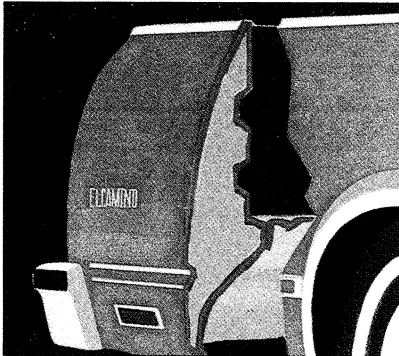
- Improved traction.
- Reduced noise.
- Decreased rolling resistance.
- Improved tread life.

AIR-ADJUSTABLE REAR SHOCKS

- Help to level the load for better ride characteristics.
- Add air to raise the rear end.
- Air valve located inside fuel filler door for convenience.

DOUBLE-WALL CONSTRUCTION

- Helps protect exterior pick-up box wall from inner wall cargo dents.
- Every fender has an inner fender to help protect against the effect of water, salt and road dirt.



FRONT SUSPENSION BALL JOINT WEAR INDICATOR

- Visible indicator warns when it's time to replace the lower control arm ball joints.

LINING WEAR SENSOR FOR DISC BRAKES

- Emits an audible signal when it's time for front pad replacement.

STANDARD COOLANT RECOVERY SYSTEM

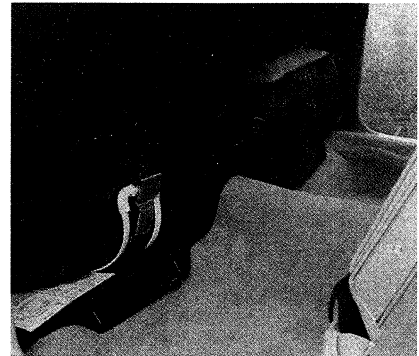
- Collects and returns radiator overflow.

LOW-DRAG FRONT DISC BRAKES

- Reduce rolling resistance and help contribute to fuel economy.

DOUBLE-WALL TAILGATE CONSTRUCTION

- Designed for one-handed operation.
- Helps protect against cargo dents.
- Tailgate lowers almost flush with cargo bed.



CONCEALED STORAGE COMPARTMENT

- Located behind driver's seat.
- Ideal for placing tools and other small articles out of view.
- Seat-back moves forward for easy access.
- Spare tire stows horizontally in a similar concealed compartment behind the passenger seat with an extractor for easy tire removal.

COIL SPRING SUSPENSION

- Helps keep everything riding smoothly.
- Spring rating varies with Gross Vehicle Weight Ratings.

CONQUISTA AND SS SPORT TRIM OPTIONS



SS Sport trim



Conquista trim

El Camino Conquista trim option includes an available special paint treatment and special accent color. SS Sport

trim option includes a large front air dam, matching Sport mirrors and Rally Wheels. See pages D and E for complete

details on other trim features of the Conquista and SS Sport trim options.