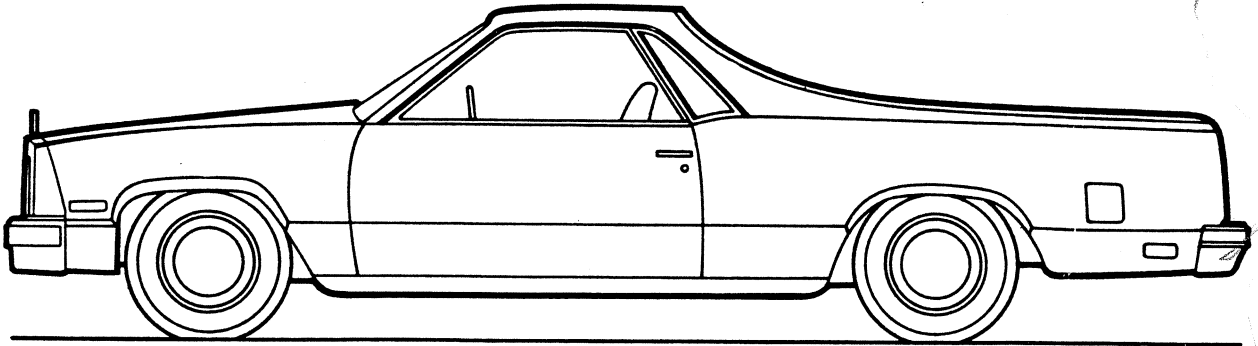


**EL CAMINO/CABALLERO****EL CAMINO/CABALLERO MODEL SELECTOR**

ORIGINAL COPY



<b>MODEL NAME</b>	<b>MODEL NUMBER</b>	<b>BODY ORDERING CODE</b>	<b>RPO NUMBER</b>
<b>EL CAMINO/ CABALLERO</b>	1GW80	—	—
<b>CONQUISTA/ AMARILLO</b>	1GW80	—	D91
<b>SS SPORT DECOR (EL CAMINO ONLY)</b>	1GW80	Z15	—
<b>DIABLO DECOR (CABALLERO ONLY)</b>	1GW80	Z15	—

# EL CAMINO/CABALLERO

## STANDARD SPECIFICATIONS

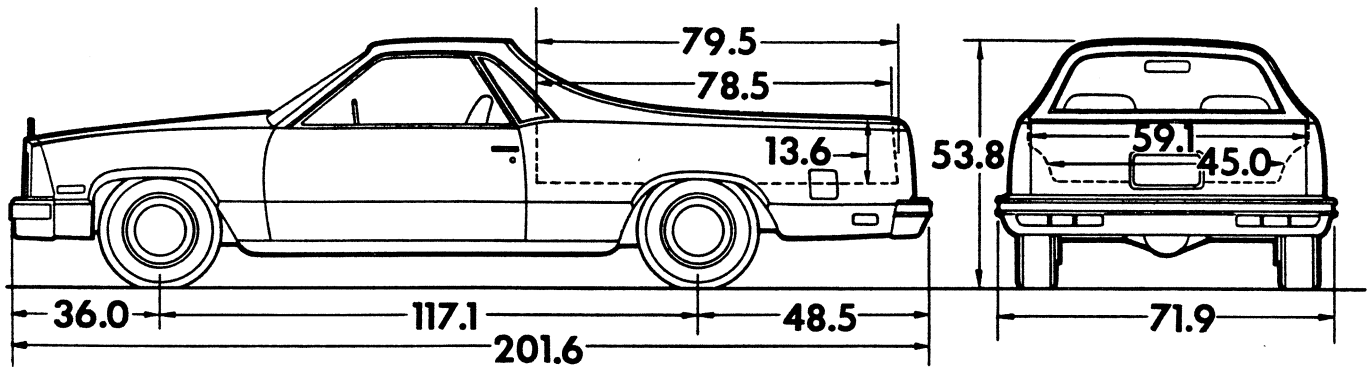
(See Gray Tab Section for Specification Details)

<b>Engine</b> <b>Base Equip.</b> ..... <b>Air Filter</b> ..... <b>Oil Filter</b> ..... <b>Exhaust System</b> ..... <b>Emission Control Systems</b> .....	3.8 Liter, 229 2-bbl. V6■ Oiled-paper Throwaway Type; .43 qt. Single, steel; Stainless/Aluminized Meet Government Requirements
<b>Suspension, Front</b> ..... <b>Springs @ Ground—Range*</b> ..... <b>Shock Absorbers</b> .....	Independent; Coil Springs 935/1122 lb. ea. 1" dia.
<b>Suspension, Rear</b> ..... <b>Axle ratio</b> ..... <b>Springs @ Ground—Range*</b> ..... <b>Shock Absorbers</b> .....	Hypoid; Coil Springs 2.41 1153/1321 lb. ea. 1" dia.; Air Booster Type
<b>Brakes</b> ..... <b>Front</b> ..... <b>Rear</b> ..... <b>Parking</b> .....	Hydraulic; Self-adjusting; Power Assisted Disc; 10.5" Rotor Drum; 9.5" x 2" Cable to Rear Wheels
<b>Electrical</b> ..... <b>Battery—Freedom II Type</b> ..... —Reserve Capacity ..... <b>Delcotron Generator</b> .....	12 Volt; Negative Ground Cold Cranking Amps—355 @ 0°F. 70 min. @ 80°F. 37 amp.
<b>Frame</b> .....	Carbon Steel; Perimeter Type
<b>Fuel Tank (nominal capacity)</b> .....	17.7 gal.
<b>Steering Gear Type</b> ..... <b>Linkage</b> .....	Power Assist; Recirculating Ball Parallelogram
<b>Transmission</b> ..... <b>Shift Location</b> .....	3-Speed Automatic Steering Column
<b>Tires</b> .....	(5) P205/75R-14 All Seasons Steel Belted Radial Ply
<b>Wheels</b> .....	(5) Disc; 14" x 6"

■ Standard engine not available for registration in the State of California; see Power Team chart.

\*The capacity of front and rear springs actually installed is dependent on the computed weight of the vehicle with optional equipment as ordered.

# EL CAMINO/CABALLERO



Model	Engine No. Cyl.	Curb Weight (lb)			Model Weight (lb)*			Ground Clearance (in.)*	
		Front	Rear	Total	Front	Rear	Total	Front	Rear
<b>1GW80</b>	6	1877	1421	3298	2104	1644	3748	6.9	6.9
<b>1GW80 With Z15</b>	6	1885	1420	3305	2112	1643	3755		

\*Dimensions with standard equipment, unloaded.

\*Model Weight includes Curb Weight plus occupants (standard seating capacity x 150 lb). Total Model Weight may vary as much as  $\pm 50$  lbs. to allow for production build variation.

## GVWR SELECTOR

*Engine	*GVW Range (lb)	†GAWR (lb)		Minimum Equipment Required for GVW Range		
		*Front	*Rear	Tires, Front	Tires, Rear	*Chassis Equipment
6	<b>4553 to 4892</b>	2094 to 2222	2459 to 2670	P205/75R-14	P205/75R-14	Standard

†GAWR—Gross Axle Weight Rating.

\*The higher ranges shown for GVWR and GAWR, front and rear, reflect capacities of springs which will be installed based on the computed curb weight of the vehicle with optional equipment, passengers and cargo.

# EL CAMINO/CABALLERO

## POWER TEAMS

### ALL STATES EXCEPT CALIFORNIA

ENGINE OPTION CONDITION	AXLE RATIO			
	2.29	2.41	2.73	3.08
<b>WITH NA5 STANDARD EMISSIONS</b>				
*LC3	—	Std	G92	—
*LG4	—	Std	—	G92
LF9	Std	—	G92	—
<b>WITH NA6 HIGH ALTITUDE EMISSIONS</b>				
LF9	Std	—	G92	—

\*Satisfies High Altitude Emission Requirements

### CALIFORNIA ONLY

ENGINE OPTION CONDITION	AXLE RATIO			
	2.29	2.41	2.73	3.08
<b>WITH YF5 CALIFORNIA EMISSIONS</b>				
LD5	—	—	Std	—
LG4	—	Std	—	G92

## ENGINE RATINGS

### ALL STATES EXCEPT CALIFORNIA

SAE Net Ratings	<b>LC3 3.8 Liter 229 2-bbl V6★</b>	<b>LG4 5.0 Liter 305 4-bbl V8★</b>	<b>LF9 5.7 Liter 350 V8 Diesel★</b>
<b>Net Horsepower</b> .....	110 @ 4000 rpm	150 @ 4000 rpm	105 @ 3200 rpm
<b>Net Torque, lb-ft</b> .....	190 @ 1600 rpm	240 @ 2400 rpm	200 @ 1600 rpm

★Light Duty Emissions

### CALIFORNIA ONLY

SAE Net Ratings	<b>LD5 3.8 Liter 231 2-bbl V6★</b>	<b>LG4 5.0 Liter 305 4-bbl V8★</b>
<b>Net Horsepower</b> .....	110 @ 3800 rpm	150 @ 4000 rpm
<b>Net Torque, lb-ft</b> .....	190 @ 1600 rpm	240 @ 2400 rpm

★Light Duty Emissions

# EL CAMINO/CABALLERO

## 1984 VEHICLES WITH STANDARD EQUIPMENT

Prices shown are effective with vehicles produced on and after February 13, 1984

Description	Model Number	Body Code	Wheel Base	Factory D&H(a)	List Price	Mfr's Suggested Retail Price★	Group Number
<b>◆ 6-Cylinder 3.8 Liter 2 BBL V6 Gasoline Engine-Engine Ordering Code LC3</b>							
El Camino/Caballero 3-Passenger .....	1GW80		117.1"	N.A.	8510.00	8510.00	12
El Camino/Caballero SS Sport/Diablo Decor 3-Passenger .....	1GW80	Z15	117.1"	N.A.	8769.00	8769.00	12

- ★ Manufacturer's Suggested Retail Prices do not include applicable destination charges, state and local taxes, license fees, optional equipment or accessories or special items or services.  
 ◆ Refer to Dealer Order Guide for California Requirements.

## OPTIONS AND ACCESSORIES WHEN INSTALLED BY GENERAL MOTORS

Prices shown are effective with vehicles produced on and after February 13, 1984

Description	Option Number	Factory D&H(a)	List Price	Mfr's Suggested Retail Price◇
<b>Conquista/Amarillo:</b> (See Conquista/Amarillo Interior and Exterior Color Selection Chart for interior and exterior color availability and ordering information). Not available when Z15 SS Sport/Diablo Decor is specified. Includes BX8 Front Fender, Body Side and Tailgate Moldings. Includes Special Two-Tone Paint .....	D91	N.A.	189.00	189.00
<b>Seat Trim:</b> (See Interior and Exterior Color Selection Chart for availability and ordering information).				
C**1 Cloth Bench .....	...	NO ADDITIONAL CHARGE		
C**2 Cloth Bucket .....	...	N.A.	147.00	147.00
C**3 Cloth 55/45 .....	...	N.A.	133.00	133.00
V**1 Vinyl Bench .....	...	N.A.	28.00	28.00
F**3 Custom Cloth CL 55/45 .....	...	N.A.	305.00	305.00
<b>Paints, Exterior:</b> Solid. (See Interior and Exterior Color Selection Chart for ordering information) .....	...	NO ADDITIONAL CHARGE		
<b>Emission Systems:</b> Dealer Note - One of the following emission options must be specified. (See Power Teams Chart for availability and specifications)				
California Emission Requirements. Includes all testing, equipment and/or certification necessary for registration in the State of California .....	YF5	N.A.	99.00	99.00
High Altitude Emission Equipment .....	NA6	NO ADDITIONAL CHARGE		
Standard Emission Equipment .....	NA5	NO ADDITIONAL CHARGE		
<b>Engines:</b> (See Power Teams Chart for availability and specifications).				
Gasoline.				
3.8 Liter 2 BBL V6 .....	LC3	NO ADDITIONAL CHARGE		
3.8 Liter 2 BBL V6. Available only when YF5 California Emissions is specified .....	LD5	NO ADDITIONAL CHARGE		
5.0 Liter 4 BBL V8 .....	LG4	N.A.	375.00	375.00
Diesel.				
5.7 Liter V8 Diesel .....	LF9	N.A.	700.00	700.00
<b>Transmission:</b> 3-Speed Automatic .....	MX1	NO ADDITIONAL CHARGE		
<b>Axles, Rear:</b> (See Power Team Chart for availability).				
Limited Slip Differential .....	G80	N.A.	95.00	95.00
Performance Ratio. Not available when LD5 3.8 Liter Engine is specified .....	G92	N.A.	21.00	21.00
<b>Tires:</b>				
P205/75R-14 All Seasons Steel Belted Radial Ply Blackwall (Standard) .....	QFT	NO ADDITIONAL CHARGE		
P205/75R-14 All Seasons Steel Belted Radial Ply Whitewall .....	QJR	N.C.	66.00	66.00
P205/75R-14 All Seasons Steel Belted Radial Ply White Lettered .....	QSA	N.C.	88.00	88.00

- (a) D & H Charges on vehicle and optional equipment include reimbursement to ordering Division for any tax that it has paid, incurred or agreed to pay thereon.  
 ◇ State and local taxes not included.

# EL CAMINO/CABALLERO

## OPTIONS AND ACCESSORIES WHEN INSTALLED BY GENERAL MOTORS

Prices shown are effective with vehicles produced on and after February 13, 1984

Description	Option Number	Factory D&H(a)	List Price	Mfr's Suggested Retail Price◇
<b>OTHER OPTIONS</b>				
<b>Air Conditioning:</b> Includes increased cooling .....	C60	N.A.	730.00	730.00
<b>Battery:</b> Heavy-Duty. Included when V10 Cold-Climate Package is specified				
Without Diesel Engine .....	UA1	N.A.	26.00	26.00
With Diesel Engine .....	UA1	N.A.	52.00	52.00
<b>Bumper Equipment:</b>				
<b>Bumper Rub Strips.</b> Front and Rear. Includes black resilient impact strips .....	VE5	N.A.	50.00	50.00
<b>Guards, Bumper.</b> Front and Rear .....	V30	N.A.	56.00	56.00
<b>Clock:</b> Quartz Electric. Included when UF7 Gage Package or U14 Instrumentation is specified .....	U35	N.A.	35.00	35.00
<b>Cold-Climate Package:</b> Available only when LF9 5.7 Liter Diesel Engine is specified. Includes UA1 H.D. Battery and K05 Engine Block Heater .....	V10	N.A.	99.00	99.00
<b>Console:</b> Front Compartment Floor. Available only when bucket seats are specified. CD4 Intermittent Windshield Wipers available only when N33 Steering Wheel is specified.	D55	N.A.	105.00	105.00
<b>Cooling, Heavy-Duty:</b>				
Without C60 Air Conditioning .....	V08	N.A.	70.00	70.00
With C60 Air Conditioning .....	V08	N.A.	40.00	40.00
<b>Door Lock System, Power:</b> Electric .....	AU3	N.A.	125.00	125.00
<b>Floor Covering:</b> Mats, Color-Keyed Floor. Two front .....	B32	N.A.	16.00	16.00
<b>Gage Package With Trip Odometer:</b> Includes voltmeter, temperature and oil pressure gages and U35 Quartz Electric Clock mounted on instrument panel. Not available when U14 Instrumentation or LF9 5.7 Liter Diesel Engine is specified .....	UF7	N.A.	111.00	111.00
<b>Glass:</b> Tinted. All windows .....	A01	N.A.	110.00	110.00
<b>Headlamps, Halogen Hi-Beam</b> .....	T15	N.A.	10.00	10.00
<b>Heater, Engine Block:</b> 600 watts, 120 volts. Included with V10 Cold-Climate Package .....	K05	N.A.	20.00	20.00
<b>Instrumentation:</b> Special. Includes tachometer and voltmeter, temperature and oil pressure gages, U35 Quartz Electric Clock and Trip Odometer. Not available when UF7 Gage Package or LF9 5.7 Liter Diesel Engine is specified .....	U14	N.A.	194.00	194.00
<b>Lighting, Auxiliary:</b> Includes headlamp warning buzzer and underhood lights .....	TR9	N.A.	20.00	20.00
<b>Mirrors:</b> Sport, LH Remote and RH Manual. Included when Z15 SS Sport Decor/Diablo Decor is specified .....	D35	N.A.	59.00	59.00
<b>Moldings:</b>				
<b>Body Side, Deluxe.</b> Black color molding only. Not available when Z15 SS Sport Decor/Diablo Decor or D911 Conquista/Amarillo is specified .....	BW2	N.A.	59.00	59.00
<b>Door Edge Guards</b> .....	B95	N.A.	15.00	15.00
<b>Front Fender, Body Side and Tailgate.</b> Not available when Z15 SS Sport Decor/Diablo Decor or BW2 Deluxe Body Side Moldings is specified. Included when D911 Conquista/Amarillo is specified .....	BX6	N.A.	58.00	58.00
<b>Preliminary Price Information</b> .....	B3W	N.A.	N.A.	N.A.
<b>Radio Equipment:</b>				
AM Radio .....	U63	N.A.	112.00	112.00
AM/FM Radio .....	U69	N.A.	171.00	171.00
AM/FM Stereo Radio .....	U58	N.A.	198.00	198.00
AM/FM Stereo Radio with Stereo Cassette Tape .....	UN3	N.A.	298.00	298.00
<b>Fixed Mast Antenna.</b> Included when U63, U69, U58 or UN3 Radio is specified .....	U73	N.A.	41.00	41.00

(a) D & H Charges on vehicle and optional equipment include reimbursement to ordering Division for any tax that it has paid, incurred or agreed to pay thereon.

◇ State and local taxes not included.

# EL CAMINO/CABALLERO

## OPTIONS AND ACCESSORIES WHEN INSTALLED BY GENERAL MOTORS

Prices shown are effective with vehicles produced on and after February 13, 1984

Description	Option Number	Factory D&H(a)	List Price	Mfr's Suggested Retail Price ♦
<b>OTHER OPTIONS</b>				
<b>Rails, Cargo Box Side</b> .....	D73	N.A.	91.00	91.00
<b>Speed Control, Electronic:</b> <i>With resume speed</i> LF9 5.7 Liter Diesel Engine is available only when C60 Air Conditioning is specified .....	K34	N.A.	175.00	175.00
<b>Steering Wheel:</b> <i>Comfortilt</i> .....	N33	N.A.	110.00	110.00
<b>Suspension</b> <i>Sport.</i> Not available LF9 5.7 Liter Diesel Engine is specified .....	F41	N.A.	15.00	15.00
<b>Tank, Fuel:</b> <i>22 gallons.</i> Not available when LF9 5.7 Liter Diesel Engine is specified .....	N23	N.A.	26.00	26.00
<b>Tie-Downs, Cargo Box</b> .....	AV3	N.A.	24.00	24.00
<b>Wheel Trim:</b>				
<i>Wheel Covers, Wire.</i> .....	N95	N.A.	159.00	159.00
<i>Wheels, Rally.</i> Included when Z15 SS Sport Decor/Diablo Decor is specified. Includes styled wheels, special hub caps and trim rings .....	ZJ7	N.A.	56.00	56.00
<b>Wheel Cover Locking Package:</b> Available only when N95 Wire Wheel Covers are specified .....	N18	N.A.	39.00	39.00
<b>Windows, Power:</b> <i>Electric</i> .....	A31	N.A.	185.00	185.00
<b>Windshield Wiper System:</b> <i>Intermittent.</i> D55 Console is available only when N33 Steering Wheel is specified .....	CD4	N.A.	50.00	50.00

(a) D & H Charges on vehicle and optional equipment include reimbursement to ordering Division for any tax that it has paid, incurred or agreed to pay thereon.  
 ♦ State and local taxes not included.

# NOTES



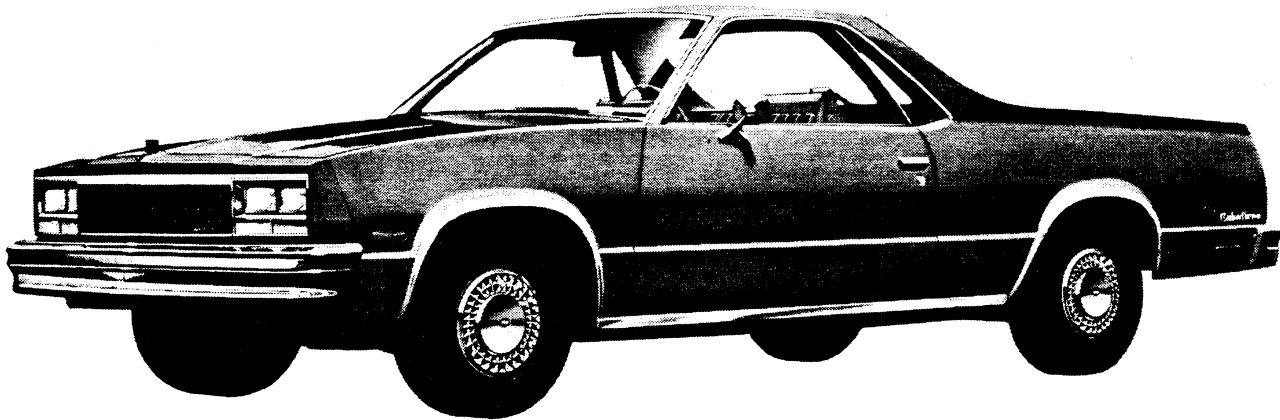
# **EL CAMINO/CABALLERO**

## **CAB & BODY FEATURES COLOR & TRIM CHARTS TWO-TONES**

# EL CAMINO/CABALLERO

## STANDARD MODEL

The Standard model includes the following items as standard equipment.



### EXTERIOR

#### • **Bright Appearance Items:**

"CHEVROLET/GMC" letters in lower LH corner of grille  
Chevrolet Bow Tie/GMC Shield emblem at center of grille header panel and in center of wheel covers  
"El Camino/Caballero" nameplates: Sides of rear fenders  
Chrome front and rear bumpers  
Door lock cylinders  
Door lock handles  
Grille and moldings  
Headlight bezels  
Headlamp and parking lamp moldings  
LH side rearview mirror  
License pocket moldings  
Upper pickup box, rear sail panel and rear roof moldings  
Quarter window moldings  
Rocker panel moldings  
Roof drip moldings  
Side door belt bead moldings  
Wheel covers  
Wheel opening moldings  
Windshield and back window reveal moldings

• **Color:** See Interior and Exterior Color Selection Chart

#### • **Door Opening and Locking Methods:**

Side doors; lift bar latch release with key lock cylinder  
Tailgate; single pivot handle on inside surface of tailgate, double latch

• **Doors:** RH and LH side doors and tailgate

• **Glass:** Windshield, drop glass in each side door. Fixed side quarter windows, and back glass

• **Grille:** Plastic construction; chrome plated

• **Horn:** Dual note

#### • **Lights:**

Combination parking/direction. Two front; dual lens  
Combination tail/stop/direction and backup, mounted in bumper  
Headlights. Dual rectangular, RH and LH  
License plate. Single rear  
Side marker and reflectors. 2 rear, quarter panel mounted;  
2 front fender mounted

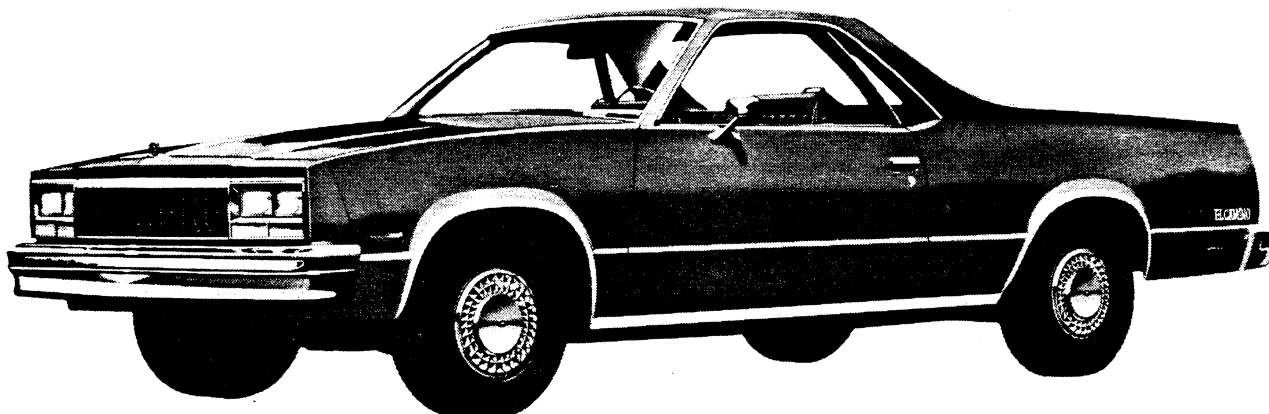
• **Mirror:** LH chrome fixed arm with rectangular head

• **Side Door Beams:** Steel beam running full width inside each side door

• **Tools:** Mechanical jack; wheel wrench

• **Wheels:** 14" x 6"; 5 bolt, 4 $\frac{3}{4}$ " bolt circle

• **Windshield Wipers and Washers:** Electric; 2-speed wipers  
Hide-A-Way blades and arms



# EL CAMINO/CABALLERO

## STANDARD MODEL

The Standard model includes the following items as standard equipment.



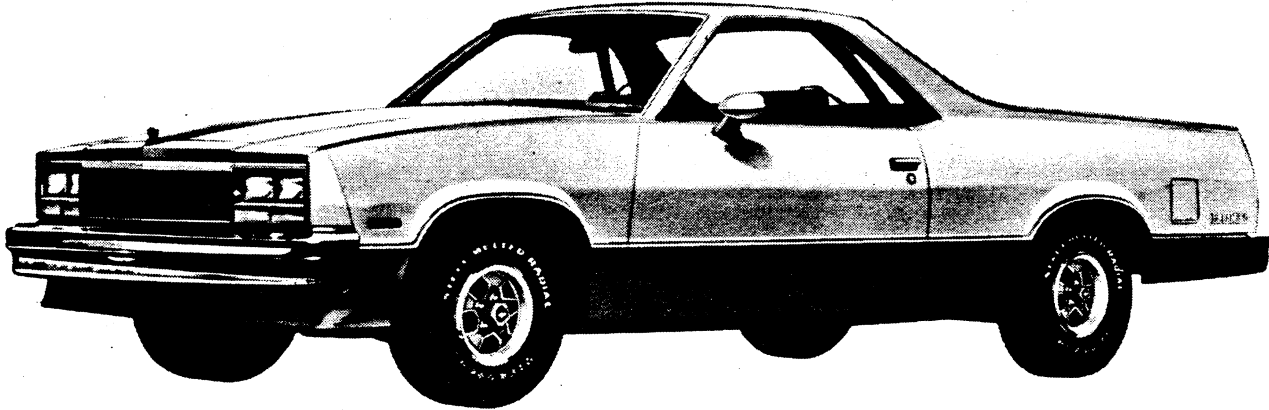
### INTERIOR

- **Air Vents:** RH and LH cowl side; individually controlled (not with air conditioning)
- **Armrests:** RH and LH full padding
- **Ashtray:** Lighted
- **Audible Warning:** Ignition key removal warning; activated by opening side door with key in switch; driver's seat belt unattached warning
- **Carpeting:** Color-keyed nylon cut pile
- **Cigarette Lighter**
- **Colors, Interior:**  
See Interior Color Selection Charts
- **Courtesy Light Switches:** Door-actuated
- **Door Locks:** Inside; bright pushbutton lock/release
- **Door Seals:** Closed-cell-type rubber
- **Flow-through Ventilation System**
- **Glove Compartment:** Lighted; with lock
- **Headliner:** Cloth over foam padding
- **Heater and Defroster:** Deluxe-air
- **Instruments:**  
Gages: Speedometer; odometer and fuel  
Switches: Exterior lights, instrument lights, dome light, wiper-washer (column operated), headlight beam (column operated), ignition, directional signal with lane change position, hazard warning and heater. Pictured symbols for heater/AC fan, defroster, hazard warning control, wiper/washer, light switch and rear window defogger  
Warning Lights: Generator, oil pressure, engine temperature, brake warning, seat belt, direction signals and high beam
- **Instrument Panel:** Fiberglass filled plastic; energy absorbing with simulated leather rectangular applique and nameplate
- **Instrument Panel Knobs:** Black; aluminum faced
- **Insulation and Sound Deadening:** Dash (firewall), under floor mat and other strategic points
- **Interior Lights:** Instrument and dome operated by main light switch
- **Mirror, Rearview:** Inside, 10" wide, day-night type
- **Scuff Plates:** Side door opening protection and floor mat retainer
- **Seat:** Full width, choice of 1) cloth or 2) textured all-vinyl trim (at extra cost), includes center armrest
- **Seat and Shoulder Belts:** 3 sets of seat belts; 2 shoulder belts in outboard positions; includes warning light and audible warning for driver's seating position
- **Spare Tire and Carrier:** Stored horizontally behind seat on passenger side; includes easy-out extractor
- **Steering Lock:** Column-mounted combination ignition switch, transmission lock, steering lock and accessory switch
- **Steering Wheel:** Color-keyed grained plastic; soft rim with simulated leather insert. "Chevrolet" bow tie/"GMC" letters on leather-like center shroud; energy absorbing, locking column
- **Sunshades:** RH and LH padded; cloth covered
- **Trim Panels:** Cloth/vinyl door trim panels with pull straps and bright trim, vinyl-coated cowl side panels and cloth/foam padded headliner
- **Window Regulator Knobs:** Clear plastic
- **Windshield Pillar Moldings:** Color-keyed

# EL CAMINO/CABALLERO

## EL CAMINO SS SPORT DECOR—Z15/CABALLERO DIABLO DECOR—Z15

The SS Sport Decor/Diablo Decor models include all items listed for the Standard model plus the following additions or substitutions.



### EXTERIOR

- **Bright Appearance Items:**
  - Delete wheel opening and rocker panel moldings
  - Caballero nameplate on rear fender
- **Front Air Dam:** Painted lower body color
- **Mirrors:** Sport type. LH and RH, painted upper body color
- **Ornamentation:** Vinyl pinstriping decal to cover paint break lines.
- **Quarter Window Moldings:** Black
- **Paint:** Accent paint color on lower body
- **Rally Wheels:** Gray and silver accents; includes bright trim ring.

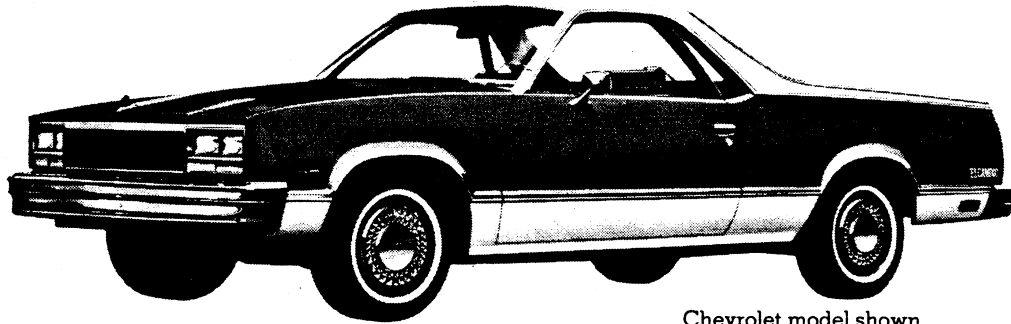
### INTERIOR

- **Ornamentation:** "Super Sport/Diablo" nameplate on instrument panel above glove compartment door

# EL CAMINO/CABALLERO

## EL CAMINO/CABALLERO WITH CONQUISTA/AMARILLO OPTION—RPO D91

This option includes all items listed for the standard model plus the following additions or substitutions.



Chevrolet model shown



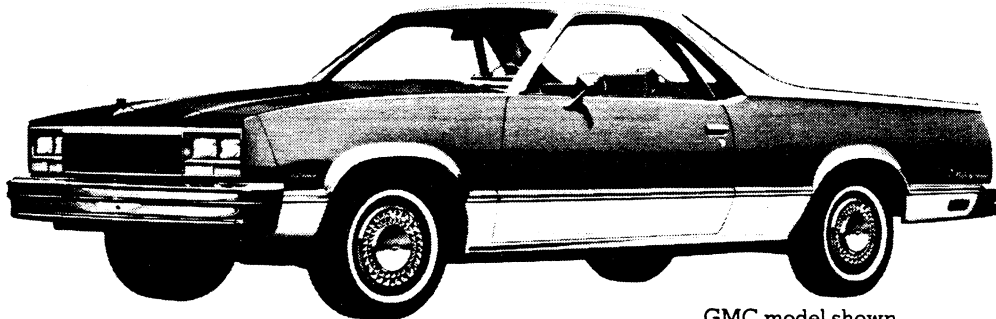
### EXTERIOR

- Bright paint break moldings on front fenders, bodysides, tailgate and sides of pickup box
- "Conquista/Amarillo" decal on RH upper portion of tailgate

- Special two-tone paint

### INTERIOR

- "Conquista/Amarillo" nameplate on instrument panel above glove compartment door



GMC model shown

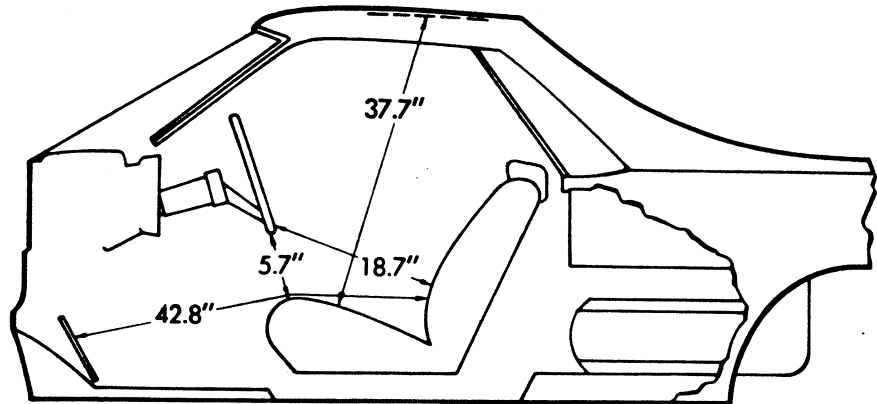
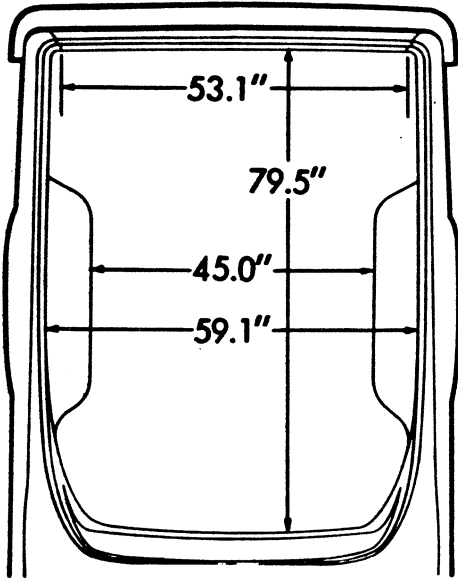
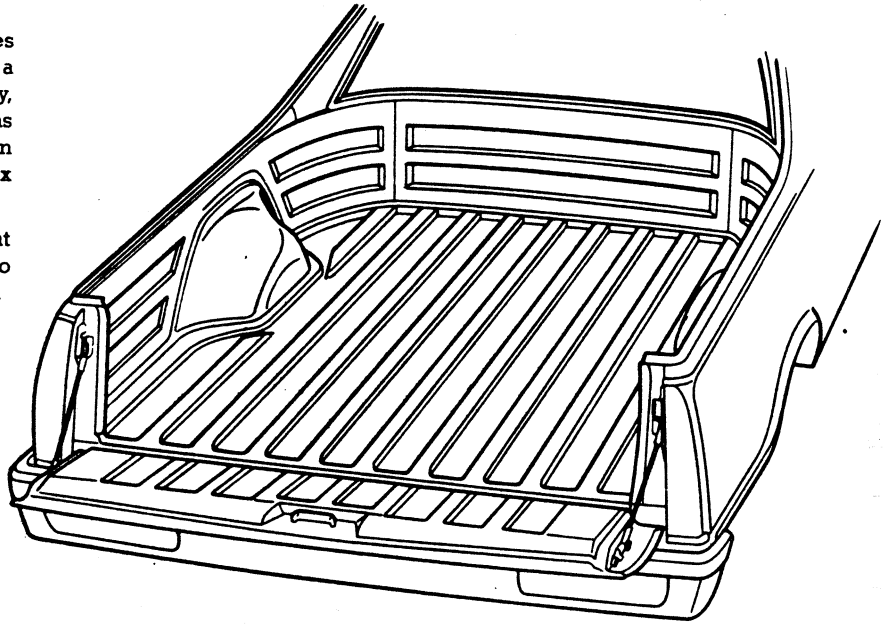


# EL CAMINO/CABALLERO

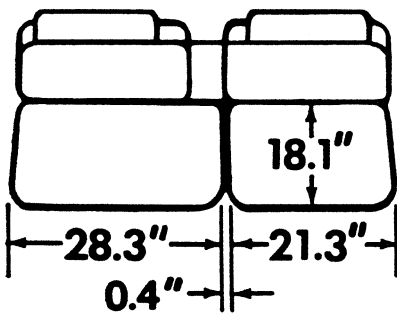
## DIMENSIONS

The El Camino/Caballero pickup box features double-wall construction on the side panels and a ribbed all-steel floor. The tailgate, featuring easy, one-hand operation and grain-tight seal, also has double-wall construction and forms a continuation of the ribbed floor when lowered. The pickup box has a capacity of approximately 35.5 cubic feet.

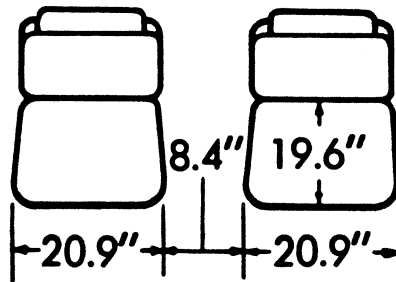
All El Camino/Caballero models have a bright metal molding at the top of the box and tailgate to prevent paint chipping when loading or unloading.



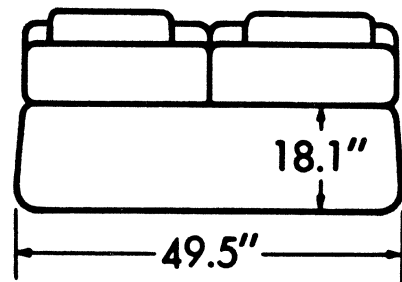
**CAB DIMENSIONS\***



**55/45 SEAT W/ARMREST**



**BUCKET SEAT**



**BENCH SEAT**

\*All interior dimensions measured with seat in rear position.

# EL CAMINO/CABALLERO

## INTERIOR AND EXTERIOR COLOR AVAILABILITY CHARTS

**Please Note:** The exterior and interior combinations shown in the charts below and designated as recommended (R), represent the ideal combinations. Those that are shown as acceptable (A) are attractive, but less desirable than the recommended combinations.

### COLOR AND TRIM SELECTION

INTERIOR TRIM COLOR		Dk. Blue	Dk. Brown	Fern	Maroon	Sand Gray
<b>MODEL</b>	<b>SEAT TYPE</b>					
<b>1GW80</b>	Cloth Bench	CDD1	CEE1	CGG1	CFF1	CQO1
	Cloth Bucket	CDD2	CEE2	CGG2	CFF2	CQO2
	Cloth 55/45	CDD3	CEE3	CGG3	CFF3	CQO3
	Vinyl Bench	VDD1	VEE1	VGG1	VFF1	VQO1
	Custom Cloth 55/45 (CL)	FDD3	FEE3	FGG3	FFF3	FQO3

### WITH D91 CONQUISTA/AMARILLO

(D60 Non-Recommended Color Combination not permitted.)

ROOF AND LOWER BODY COLOR	Color Code		#HOOD AND CENTER BODY COLOR		R	A	R	A	R
	L	U							
Blue, Light (Metallic)	22	22	Dark Blue (Metallic)	27M	R				
Brown, Light (Metallic)	62	62	Dark Brown (Metallic)	67M		R			
Fern, Light (Metallic)	42	42	Dark Fern (Metallic)	48M			R		
Maroon, Light (Metallic)	73	73	Maroon, Dark (Metallic)	78M				R	
Bright Silver (Metallic)	17	17	Black	19M					R
White	11	11	Dark Blue (Metallic)	27M	R				

L—Lower U—Upper #Must be Ordered.

### WITH Z15 SS SPORT DECOR (Chevrolet Only) or Z15 DIABLO DECOR (GMC Only)

(D60 Non-Recommended Color Combination not permitted.)

EXTERIOR PAINT COLOR	Color Code		#LOWER PAINT ACCENT COLOR	*DECAL COLOR SCHEME		R	A	R	A	R
	L	U								
Blue, Light (Metallic)	22	22	Dark Blue (Metallic)	27M	Blue	R				
Brown, Light (Metallic)	62	62	Dark Brown (Metallic)	67M	Brown		R			
Fern, Light (Metallic)	42	42	Dark Fern (Metallic)	48M	Fern			R		
Maroon, Light (Metallic)	73	73	Dark Maroon (Metallic)	78M	Maroon				R	
White	11	11	Dark Maroon (Metallic)	78M	Maroon				R	
White	11	11	Bright Silver (Metallic)	15M	Charcoal					R

\*Color determined by Exterior Color, Lower Accent Color and Interior Trim Combination.

L—Lower U—Upper #Must be Ordered.

### WITHOUT D91 or Z15 For Special Paint Applications Please Contact the Zone Office.

(D60 Non-Recommended Color Combination is permitted.)

EXTERIOR PAINT COLOR	Color Code		R	A	R	A	R	A
	L	U						
Beige	59	59		R		A		
Black	19	19				R	R	
Blue, Dark (Metallic)	27	27	R					
Blue, Light (Metallic)	22	22	R					
Brown, Dark (Metallic)	67	67		R				
Brown, Light (Metallic)	62	62		R				
Fern, Dark (Metallic)	48	48			R			
Fern, Light (Metallic)	42	42			R			
Maroon, Light (Metallic)	73	73				R	A	
Maroon, Dark (Metallic)	78	78				R	A	
Bright Silver (Metallic)	17	17	R			R	R	
White	11	11	R	R	R	R	R	R

# NOTES



# 3.8 LITER (229 2-bbl) V6\*

(Ordering Code LC3)

## Applications

Standard: El Camino/Caballero

Optional: None

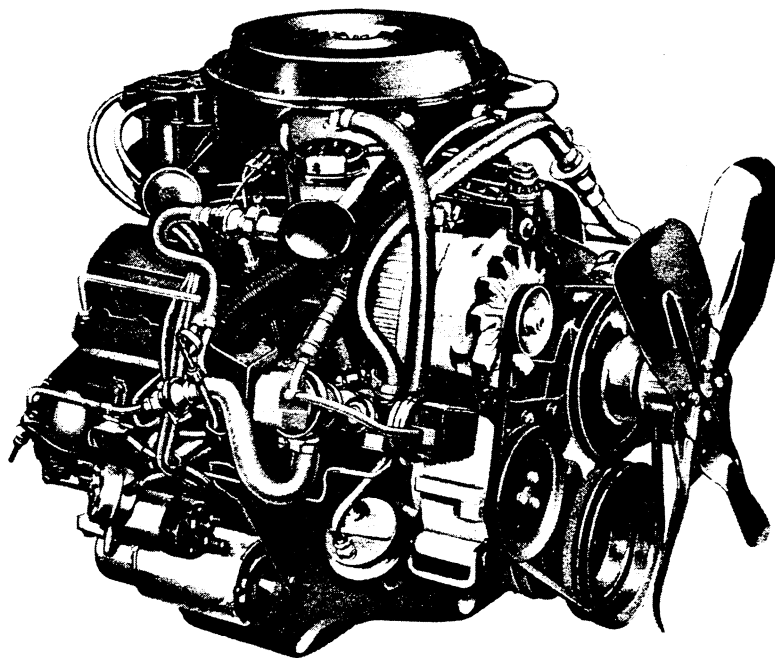
\*Not Available in California

## Basic Specifications

Engine type ..... Valve-in-head  
Piston displacement (Liter/Cu. In.) ..... 3.8/229  
Bore & stroke (nominal) ..... 3.74" x 3.48"  
Compression ratio ..... 8.6:1  
Carburetor type ..... 2-barrel  
Exhaust—Single ..... All

## Test Procedures

These curves represent full-throttle performance as obtained from a dynamometer test simulating actual operating conditions when the engine is in the vehicle, with ratings corrected to barometric pressure of 29.32" mercury and 77°F dry air.

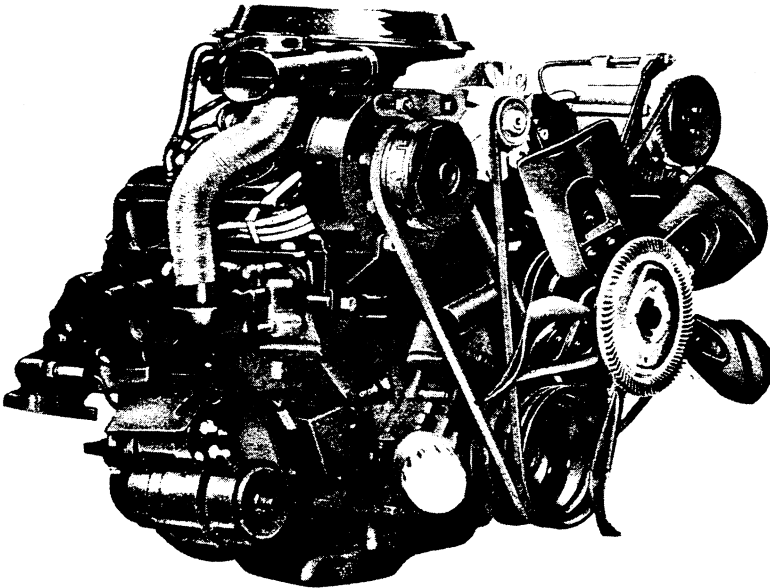


## Engine Ratings

SAE net horsepower (77°F) ..... 110 @ 4000 rpm  
SAE net torque, lb-ft (77°F) ..... 190 @ 1600 rpm

# 3.8 LITER (231 Cu. In.) V6\*

(Ordering Code LD5)



## Applications

Standard: None

Optional: El Camino

\*Available in California Only

## Basic Specifications

Engine type ..... Valve-in-head  
Piston displacement (Liter/Cu. In.) ..... 3.8/231  
Bore & stroke (nominal) ..... 3.8" x 3.4"  
Compression ratio ..... 8.0:1  
Carburetor type ..... 2-barrel  
Exhaust—Single ..... All

## Test Procedures

These curves represent full-throttle performance as obtained from a dynamometer test simulating actual operating conditions when the engine is in the vehicle, with ratings corrected to barometric pressure of 29.32" mercury and 77°F dry air.

## Engine Ratings

SAE net horsepower (77°F) ..... 110 @ 3800 rpm  
SAE net torque, lb-ft (77°F) ..... 190 @ 1600 rpm

# 3.8 LITER (229 Cu. In.), 3.8 LITER (231 Cu. In.) V6 ENGINES

## SPECIFICATIONS

		<b>El Camino/Caballero</b>	
		<b>*3.8 Liter/229 V6 2-bbl</b>	<b>*3.8 Liter/231 V6 2-bbl</b>
<b>Basic Description</b>		V6; Valve-in-head	
Displacement (Liter/Cu. In.)		3.8/229	3.8/231
Bore & Stroke		3.74 x 3.48	3.80 x 3.40
Compression Ratio		8.6:1	8.0:1
Firing Order		1-6-5-4-3-2	
SAE Net Horsepower @ rpm		110 @ 4000	110 @ 3800
SAE Net Torque (lb-ft) @ rpm		190 @ 1600	190 @ 1600
<b>Air Cleaner</b>		Replaceable paper element	
<b>Camshaft</b>			
Bearings		Steel-backed babbitt	
Intake Valve	Opens	42° BTC	16° BTC
(excluding ramps)	Closes	78° ABC	63° ABC
Exhaust Valve	Opens	78° BBC	68° BBC
(excluding ramps)	Closes	52° ATC	29° ATC
Intake Duration w/o ramp		300°	259°
Exhaust Duration w/o ramp		310°	277°
<b>Carburetor</b>			
Type		2-barrel	
Make		Rochester	
Venturi ID (in)		1.218	1.093
Throttle Bore (in)		1.38	1.4375
Choke Control		Automatic	
<b>Connecting Rods</b>			
Material		Drop-forged steel	Cast arma steel
Length (in)		5.70	5.96
Bearings		Premium aluminum	
<b>Crankcase Ventilation</b>		Closed positive	
<b>Crankshaft</b>			
Material		Cast nodular iron	
Number of Counterweights		6	
Main Journal dia (in)		2.45	2.50
Crankpin Journal dia (in)		2.10	2.25
Torsional Damper		Inertia; rubber mounted	
Bearings		Upper and Lower – premium aluminum	
<b>Distributor</b>		High Energy Unit, Delco-Remy	
<b>Fuel Filter</b>			
Carburetor		Pleated fiber element	
Fuel Tank		Plastic strainer	
<b>Lubrication System</b>		Controlled full pressure	
Main Bearings		Direct pressure	
Camshaft Bearings		Direct pressure	
Timing Gear		Centrifugally sprayed	
Connecting Rods		Direct pressure	
Valve Mechanism		Pressure & gravity	
Cylinder Walls		Cross sprayed throw-off from rod bearing	
Piston Pins		Cross sprayed throw-off from rod bearing	
<b>Oil Capacity (qts)</b>			
With filter change		4.5	
W/o filter change		4	

\*Not available in California

■ Available in California only

# 3.8 LITER (229 Cu. In.), 3.8 LITER (231 Cu. In.) V6 ENGINE

## SPECIFICATIONS

	El Camino/Caballero	
	*3.8 Liter/229 V6 2-bbl	3.8 Liter/231 V6 2-bbl
<b>Oil Filter</b>	Throwaway	
Capacity (qts)	.43	.31
<b>Oil Pump</b>	Spur gear; distributor shaft driven	
Type	4.3 @ 2000 rpm	
Capacity (gpm)	50-65▲ @ 2000 rpm	
Normal Pressure (psi)		
<b>Pistons</b>	Cast aluminum alloy	
Material	Closed	Full w/transverse slot
Skirt	Sump	Dished
Head		
<b>Piston Pins</b>	Rod shrink fit to pin	
Type	Chromium steel	
Material		
<b>Piston Rings</b>		
Compression Rings	2	
Number	Upper - barrel; lower - inside bevel	
Type	Cast iron alloy	
Material	Spacer-expander with upper and lower rails	
Oil Control Ring	1	
Number	Multi-piece	
Type	Steel	
Material	Harrison; 195°	
<b>Thermostat</b>		
<b>Valve Train</b>	Individually mounted rocker arms, push rod actuated	
Type	Hydraulic	
Lifters	1.50:1	
Rocker Arm Ratio	Integral with cylinder head	
Valve Guides	Zero	
Valve Lash		
Intake Valves	Alloy steel	
Material	1.84	1.71
Diameter (in.)	None	
Face Coatings	Machined in cylinder head	
Seats	High alloy steel	
Exhaust Valves	1.50	
Material	Plain head & seat, full chrome	Nickel plated head
Diameter (in.)	Machined in cyl. head; induction hardened	
Face Coating	Yes	
Seats		
Rotators (exhaust)		
<b>Water Pump</b>	Centrifugal	
Type	21.6 @ 2000 rpm	
Capacity (gpm)		

\*Not available in California

■ Available in California only

▲ Deadhead pressure

# 5.0 LITER (305 Cu. In.) V8

(Ordering Code LG4)

## Applications

Standard: None

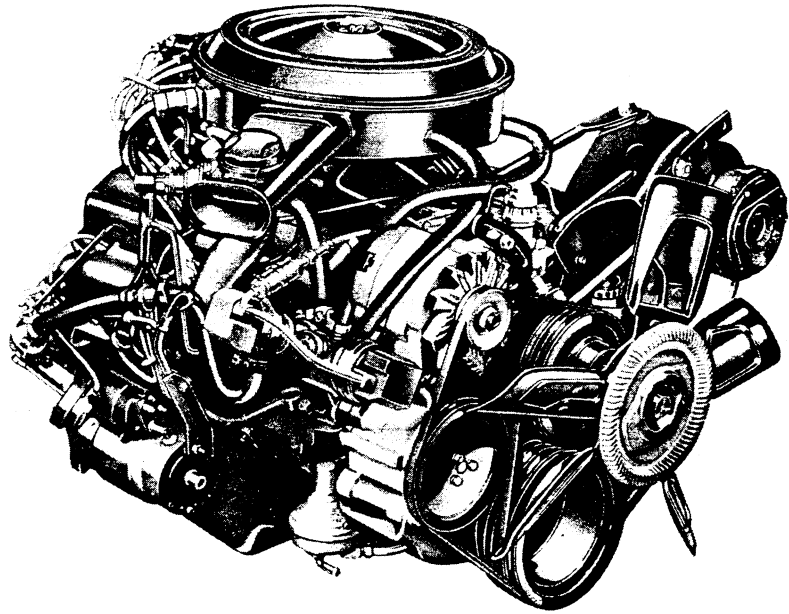
Optional: El Camino/Caballero

## Basic Specifications

Engine type ..... Valve-in-head  
Piston displacement (Liter/Cu. In.) ..... 5.0/305  
Bore & stroke (nominal) ..... 3.74" x 3.48"  
Compression ratio ..... 8.6:1  
Carburetor type ..... 4-barrel  
Exhaust—Single ..... All

## Test Procedures

These curves represent full-throttle performance as obtained from a dynamometer test simulating actual operating conditions when the engine is in the vehicle, with ratings corrected to barometric pressure of 29.32" mercury and 77°F dry air.



## Engine Ratings

### All States

SAE net horsepower (77°F) ..... 150 @ 4000 rpm

SAE net torque, lb-ft (77°F) ..... 240 @ 2400 rpm

# 5.0 LITER (305 Cu. In.) V8 ENGINES

## SPECIFICATIONS

	<b>El Camino/Caballero</b>	<b>Series 10/1500-20/2500(LE9)</b>	<b>Series 10/1500-20/2500(LF3)</b>
	<b>5.0 Liter/305 4-bbl</b>	<b>★ 5.0 Liter/305 4-bbl</b>	<b>▲ 5.0 Liter/305 4-bbl</b>
<b>Basic Description</b>		V8; valve-in-head	
Displacement (Liter/cu in)	5.0/305	5.0/305	5.0/305
Bore & Stroke	3.74 x 3.48	3.74 x 3.48	3.74 x 3.48
Compression Ratio	8.6:1	9.2:1	8.6:1
Firing Order		1-8-4-3-6-5-7-2	1-8-4-3-6-5-7-2
SAE Net Horsepower @ rpm	150 @ 4000	160 @ 4400	155 @ 4000
SAE Net Torque (lb-ft) @ rpm	240 @ 2400	235 @ 2000	245 @ 1600
<b>Air Cleaner</b>	Thermostatically controlled; Oil wetted paper element		
<b>Camshaft</b>			
Bearings	Steel-backed babbitt		
Intake Valve	Opens	44° BTC	16° BTC
	Closes	76° ABC	228° ATC
Exhaust Valve	Opens	78° BBC	234° BTC
	Closes	52° ATC	25° ATC
Intake Duration	300°		244°
Exhaust Duration	310°		259°
<b>Carburetor</b>			
Type		4-barrel	
Make		Rochester	
Venturi ID (in.)	1.093		1.218
Throttle Bore (in.)	Pri.-1.38; Sec.-2.25		Pri.-1.38; Sec.-2.25
Choke Control		Automatic (Electric)	
<b>Connecting Rods</b>			
Material	Drop-forged Steel		
Length (in)	5.695-5.705		
Bearings	Premium aluminum		
<b>Crankcase Ventilation</b>	Closed positive		
<b>Crankshaft</b>			
Material	Cast nodular iron		
Number of Counterweights	6		
Main Journal dia (in)	2.45		
Crankpin Journal dia (in)	2.10		
Torsional Damper	Inertia; rubber mounted		
Bearings	Upper—Micro-babbitt or copper lead; Lower—premium aluminum		
<b>Distributor</b>	High Energy Unit, Delco-Remy; centrifugal & vacuum advance		
<b>Fuel Filter</b>			
Carburetor	Pleated fiber element		
Fuel Tank	Plastic strainer		
<b>Lubrication System</b>	Controlled full pressure		
Main Bearings	Direct pressure		
Camshaft Bearings	Direct pressure		
Timing Gear	Centrifugally sprayed		
Connecting Rods	Direct pressure		
Valve Mechanism	Pressure & gravity		
Cylinder Walls	Cross sprayed throw-off from rod bearing		
Piston Pins	Cross sprayed throw-off from rod bearing		
<b>Oil Capacity (qts)</b>			
With filter change	4.625		5
W/o filter change		4	

★ Not available in California    ▲ Available in California only

# 5.0 LITER (305 Cu. In.) V8 ENGINES

## SPECIFICATIONS

	El Camino/Caballero	Series 10/1500-20/2500 (LE9)	Series 10/1500-20/2500 (LF3)
	5.0 Liter/305 4-bbl	★ 5.0 Liter/305 4-bbl	▲ 5.0 Liter/305 4-bbl
<b>Oil Filter</b>		Throwaway	
Capacity (qts)	.625	.85	
<b>Oil Pump</b>		Spur gear; distributor shaft driven	
Type			
Capacity (gpm)	4.3 @ 2000 rpm		
Normal Pressure (psi)	50-65 @ 2000 rpm	45 @ 2000 rpm	
<b>Pistons</b>		Cast aluminum alloy	
Material			
Skirt	Closed		
Head	Sump		
<b>Piston Pins</b>		Rod shrink fit to pin	
Type			
Material	Chromium steel		
<b>Piston Rings</b>		Upper – barrel; lower – inside bevel	
Compression Rings			
Number	2		
Type			
Material	Cast iron alloy		
Oil Control Ring			
Number	1		
Type	Multi-piece		
Material	Steel		
<b>Thermostat</b>	Harrison; 195°		
<b>Valve Train</b>		Individually mounted rocker arms, push rod actuated	
Type			
Lifters	Hydraulic		
Rocker Arm Ratio	1.50:1		
Valve Guides	Integral with cylinder head		
Valve Lash	Zero		
Intake Valves			
Material	Alloy steel		
Diameter (in.)	1.84		
Face Coatings	None		
Seats	Machined in cylinder head		
Exhaust Valves			
Material	High alloy steel		
Diameter (in.)	1.50		
Face Coating	Aluminized		
Seats	Machined in cyl. head; induction hardened		
Rotators (exhaust)	Yes		
<b>Water Pump</b>		Centrifugal	
Type			
Capacity (gpm)	21.6 @ 2000 rpm		

★ Not available in California  
 ▲ Available in California only

