

# GMC

## Caballero



Caballo



Caballero

# Caballero

## THE NEW WAY TO GO

GMC's Caballero is **NEW!** It's one of a new generation of hard-working, youthful, good-looking vehicles. It's lighter than last year's models and trimmer on the outside, yet it's roomy inside and fuel-efficient. Caballero has retained its 800-lb-payload capacity and its big pickup box can handle 4' x 8' panels with tailgate down. It's not one . . . but three: Caballero, Caballero Laredo, or Diablo. Three separate versions with beautiful, exciting exteriors, solid colors, two-tones and vinyl roofs. And there's the dramatic Diablo . . . it will turn almost any youthful head . . . with its special exterior trim.

Under the hood a new 3.3 Liter (200 CID) V6 is standard and for California only a 231 CID V6 is the required V6 powerplant with an automatic transmission. Manual transmission is standard and an automatic is available on other engine models.

As a prestige vehicle that's a working vehicle, too, it's right at home as a personal car, as a company vehicle, supervisor's "special" for construction, utilities, trades; and as a "super" delivery vehicle.

The younger set will like the Caballero's, Laredo's and Diablo's smart looks that sets them distinctly apart. They'll also like the feel and performance of the smart, available 305 CID or 350 CID V8s teamed up with either an available 4-speed manual or automatic transmission. (4-speed manual transmission not available in California). There are a whole lot of ways to go with the all-new GMC Caballero.

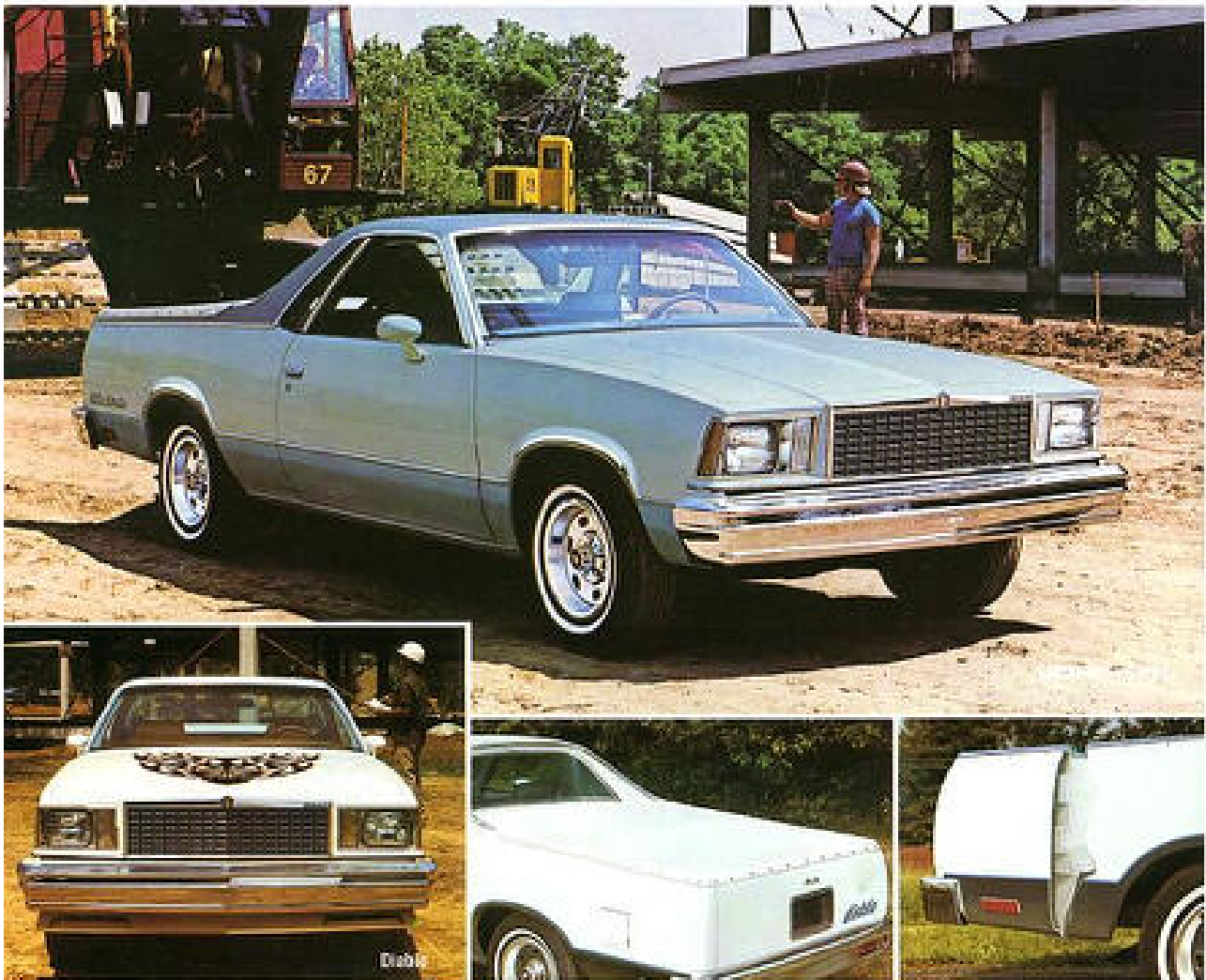
Inside the handsomely styled and appointed cab, there's a sizable cargo area behind the front seat. It's a convenient location for storing items out of sight when the vehicle is locked.

This vehicle with its elegant styling features a handsome bright grille accented by rectangular headlamps. There's impressive visibility with a spacious windshield, side quarter windows and an excitingly designed wraparound rear window.

The Caballero is easily identified by its handsome quarter panel nameplate and its tailgate-mounted name identification. With an available vinyl roof and tonneau cover it speaks of class.

The Caballero Laredo model is distinguished by a special two-tone paint treatment and "Laredo" identification on the tailgate. It looks soft and beautiful but can carry a big stick.

Diablo is special. Its identification is striking and big. Mounted on the lower door panel with a distinctive paint treatment, it demands quiet attention. Up front an air dam adds authority to the front appearance. Diablo's distinctive rally wheels match the lower body accent color and its sport-type mirrors are finished in the upper body color, while quarter window moldings are black. Diablo is special . . . for someone special.



Inside the spacious Caballero cab, there's a standard split bench seat that provides access to the rear cargo area. The seat has a full-foam padded cushion and backrest and is available at extra cost in a choice of cloth or textured all-vinyl trim. Vinyl-trimmed bucket seats with an integral, accented head restraint and bucket seats are available at extra cost with or without a center console.

A new energy-absorbing padded instrument panel features a rectangular instrument cluster. Available radio and air conditioning controls are positioned neatly into the center module on the instrument panel with standard heater/delester controls.

Power packages can be tailored to individual needs beginning with the new standard V6 engine. The 3.3 Liter (200 CID) V6 with 3-speed manual transmission is the standard power team except in California. There, the 231 cu. in. V6 and automatic is the required power team. If there's a need for more power or performance, then the 305 cu. in. V6 and the 350 cu. in. V8 are available.

The GMC trucks shown in this catalog are equipped with GM-built engines produced by various divisions. Please refer to the engine chart included in this catalog or available from your dealer for complete details about engine sources and availability.

Caballero's big cargo box features double-wall construction. This design not only strengthens the cargo box, it helps retain Caballero's good-looking exterior finish. When cargo bumps against the inside wall, the inside wall absorbs the damage, if any. Bumps and dents don't show through to mar the quality exterior finish.

Double-wall steel construction also is employed in the doors and hood to help control noise, temperature levels and add to the overall structural integrity.

There's an available tonneau cargo box cover for the Caballeros. Its snap-on design makes it easy to install and remove and it's available in either black or white vinyl.

#### ... A WORD ABOUT THE COMPONENTS AND OPTIONAL EQUIPMENT IN THESE GMC TRUCKS.

The GMC trucks described in this brochure incorporate thousands of different components produced by various divisions of General Motors and by various suppliers to GMC Truck. From time to time during the manufacturing process it may be necessary in order to meet public demand for particular vehicles or equipment, or to meet federally mandated emissions, safety and fuel economy requirements, or for other reasons, to produce GMC products with different components or differently sourced components than initially scheduled. All such components have been approved for use in GMC products by GMC Truck, and will provide the quality performance associated with the GMC name.

With respect to factory-installed extra-cost optional equipment, make certain you specify the type of equipment you desire on your vehicle when ordering it from your dealer. Before taking delivery of the vehicle, we suggest you verify that it includes the optional equipment that you ordered, or if there are changes, they are acceptable to you.



# Caballero Accessories

Fit out your Caballero, Laredo or Diablo with those comfort and convenience items that suit your living mode . . . available at extra cost.

1 Available factory-installed Four-Seasons air conditioning is an integrated system that provides year 'round heating, cooling and defogging. Instrument panel-mounted controls include a 4-speed blower with the temperature control lever and mode selector within easy reach. Available radio equipment comes in a choice of Delco AM or AM/FM radio, AM/FM stereo, AM radio with stereo

tape and AM/FM stereo radio with stereo tape system. A concealed windshield antenna or power antenna are available with factory installation.

2 Electric power windows and door locks are available for the new Caballero. Both systems include individual controls at the passenger side with main controls at the driver's location.

3 Caballero's wide-opening engine compartment provides easy access to service check points. An auxiliary underhood light is available.

4 These Rally wheels are standard with Diablo and available for Caballero and Caballero Laredo. Available wheel covers include a styled and wire wheel version.

5 Dual remote control sport mirrors are available and painted to match vehicle upper body

color. Dual sports mirrors are standard on Diablo. (Only left hand mirror is remote controlled.) Other available equipment includes cargo box rails, Cruise-Master speed control, cargo box tie downs and an intermittent windshield wiper system.

6 Both 3-speed and 4-speed manual transmissions are operated by a floor-mounted shift lever.

7 The Delco Freedom Battery is standard on Caballero. It never needs recharging. A 37 amp Delcotron generator also is standard.

8 Caballero's Electronic High Energy Ignition System helps improve cold weather starts, extends tune-up intervals and spark plug life. Points and condenser used in conventional ignition systems are eliminated.



All 1978 Caballero models include the following General Motors Safety Items as standard equipment. **FOR OCCUPANT PROTECTION:** Seat belts with push-button buckles at all passenger positions, combination seat and inertia-rod shoulder belts for driver (with reminder light and buzzer) and right front passenger, energy-absorbing steering column, passenger guard door locks, safety door latches and stamped steel hinges, folding seat back latches, energy-absorbing padded instrument panel, contoured windshield header, thick laminate windshield, safety armrest, safety steering wheel. **FOR ACCIDENT PREVENTION:** Side marker lights and reflectors, parking lamps that illuminate with headlamps, four-way hazard warning flasher, backup lights, lane-change indicator in direction signal control, windshield defrosters, wiper and dual-speed wipers, wide-view inside mirror with vinyl edge, shatter-resistant glass and deflecting support, outside rearview mirror, dual master cylinder brake system with warning light, starter safety switch, dual-action safety hood latches. **FOR THEFT PROTECTION:** Anti-theft ignition key reminder buzzer, anti-theft steering column lock.

Vehicles shown feature standard or available factory-installed equipment unless noted as dealer-installed accessories. Items referred to as options or available are at extra cost. Different model applications of the components that are listed in accompanying tables as well as other items of the factory-installed equipment may be ordered through your GMC dealer.



Form 407 78-3

## Recommended Maintenance Intervals for 1978

Spark Plugs	22,500 Miles or 12 Months
Chassis Lubrication	7,500 Miles or 12 Months
Engine Oil	7,500 Miles or 12 Months
Air Cleaner Element	30,000 Miles
Oil Filter	Break-in 7,500 Miles Every 15,000 Miles after
Auto. Trans. Fluid	Every 60,000 Miles

## ENGINE/TRANSMISSION SELECTOR GUIDE

ENGINE	TRANSMISSION	REAR AXLE RATIO (TO 1)	
		STANDARD	AVAILABLE
3.3 Liter (200 CID) V6	3-Speed Manual Std.†	2.73	—
	Automatic Avail.†	2.73	—
3.0† (3.8L) V6*	Automatic Std.	2.73	—
3.05 (5.0L) V6	4-Speed Manual†	2.73	—
	Automatic Avail.	2.41	2.73
3.50 (5.7L) V6	4-Speed Manual Avail.†	2.73	—
	Automatic Std.	2.41	2.73

† Standard Engine, State of California Only.  
\* Not Available State of California.

GMC Truck & Coach Division reserves the right to make changes of any kind without notice in price, color, materials, equipment, specifications and models and also to discontinue models. Data shown is basic information for the prospective buyer effective at time of issuance of this pamphlet. Dealer will provide complete up-to-date information on available equipment, specifications, etc. not shown here.

LITHO IN USA



Caballero by



the exciting way to g

Make your selection from this '79 trio of available glamorous GMC Caballero Pickups -- Diablo, Laredo or basic Caballero -- then slip behind the wheel and experience the fun of driving this sporty pickup. GMC Caballero, a great concept in trucks, combines hardworking utility with the prestigious appearance and body-embracing comfort of a passenger car. The well-balanced design of this tough, 112-inch-wheelbase vehicle helps provide a smooth ride. It's slim and convenient (201.6" O.L.) to slip easily through traffic or to park in close quarters. All three Caballeros are equipped with an imposing array of standard features -- outside, inside and under the hood.

#### CABALLERO

The base Caballero with its aura of quiet elegance has the same styling flair and innovative engineering as the Diablo and Laredo models plus one impressive advantage all its own -- the smallest price tag of all three. Choose one of 14 solid exterior colors with matching or coordinating color for the beautiful cab interior. If you wish, add available contrasting vinyl roof and tonneau cover. The Caballero nameplate appears on rear quarter panel and the GMC emblem identification is on the tailgate and grille. Read on and see why Caballero may be your next exciting motoring adventure.